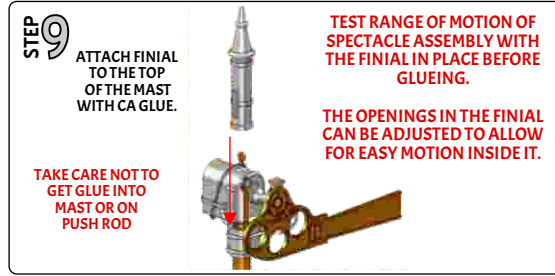
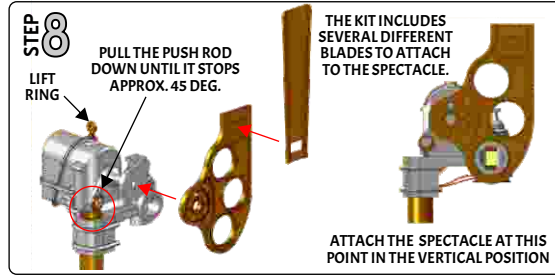
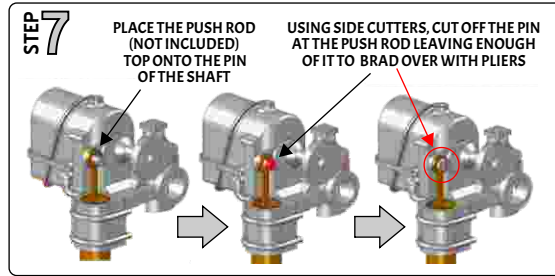
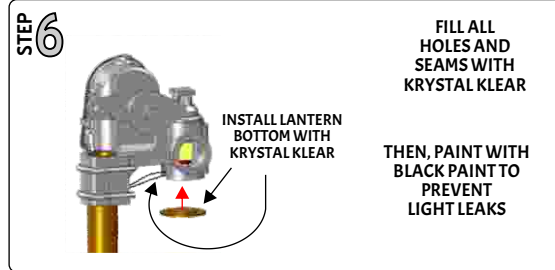
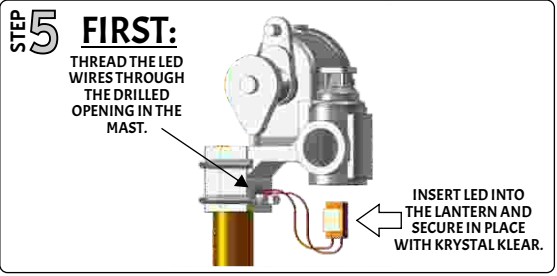
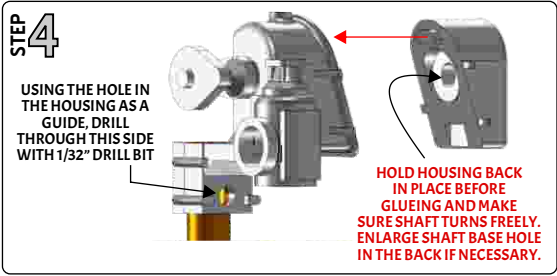
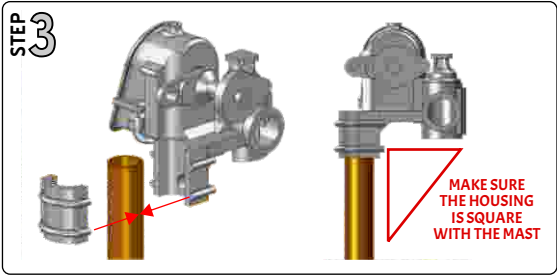
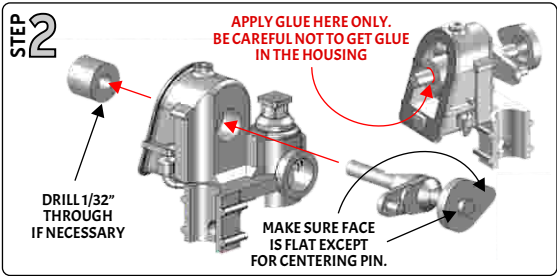
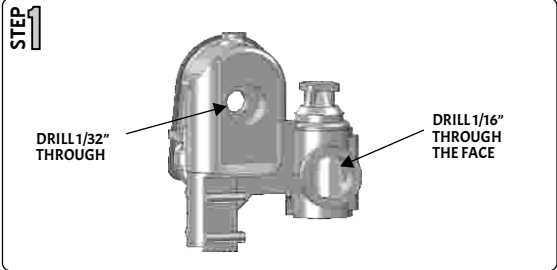
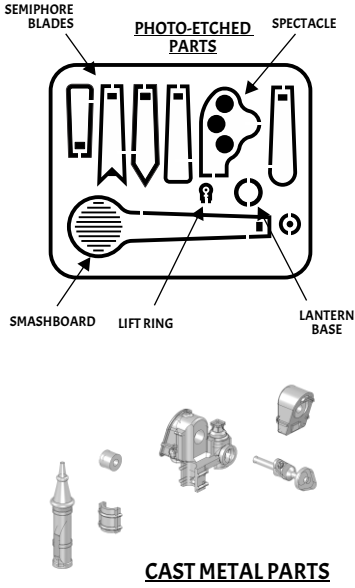


**PARTS**



**IMPORTANT!**  
READ THROUGH ENTIRE ASSEMBLY AND TEST FIT PARTS BEFORE BEGINNING !

**Tools You May Need:**

- 1/32" Drill Bit
- 1/16" Drill Bit
- Needle Files
- Single Edge Razor Blade
- Dremel Tool
- CA Type Super Glue
- Krystal Klear
- Red, Green and Yellow Transparent Paint

**Clean and Debur all Parts**

before beginning assembly. Some parts may need to be opened with a drill bit.

**Mark the locations**

of the parts on the mast using the Diagram provided.

Transparent Paint Sample in Three Colors.



Item Number 0019

**PAINTING**

Prime and paint the spectacle and blade assembly then fill the roundel openings with micro Krystal Klear and (when thoroughly dry) use a transparent paint (like Vallejo) for the roundel color. The transparent paints can be easily mixed together to allow an unlimited variation to the roundel color.

We suggest priming the finished assembly with a laquer based primer (Tamiya). The LED will need to be masked before painting. One of the easiest ways to mask the LED is to put a small amount of modeler's clay in the lantern opening. Don't press the clay too far into the signal head or it may be difficult to remove once the paint is dry.