

PLEASE !! READ THROUGH ALL OF THE INSTRUCTION STEPS BEFORE STARTING. THE PARTS ARE DESIGNED TO BE PRECISE FITTING AND SOME ASSEMBLIES BUILD ON PREVIOUS STEPS.

THIS KIT HAS BEEN DESIGNED TO MINIMIZE SOME OF THE PAINTING REQUIREMENTS NEEDED FOR MOST CRAFTSMAN KITS. WE RECOMMEND THAT YOU BUILD THE SUB-ASSEMBLIES AS SHOWN IN THE ILLUSTRATED STEPS. SOME MODELERS PREFER TO BUILD THE STRUCTURE COMPLETELY BEFORE PAINTING. ALL PARTS MAY BE PAINTED BEFORE ASSEMBLY WHILE THEY ARE STILL ON THEIR SPRUES.

1. BEFORE YOU BEGIN CONSTRUCTION, TAKE THE TIME TO BECOME FAMILIAR WITH THE PARTS AND INSTRUCTIONS. THE PARTS ARE NUMBERED TO MAKE IT EASIER TO FIND THEM ON THE SPRUES. **IN GENERAL, MOST PARTS CAN BE ASSEMBLED AND WILL HOLD THEMSELVES IN PLACE ALLOWING YOU TO APPLY GLUE TO THE TAB AND SLOT AREAS. WE RECOMMEND CARPENTERS WOOD GLUE FOR ASSEMBLY.**

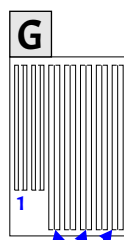
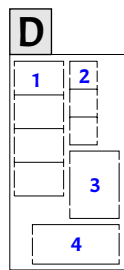
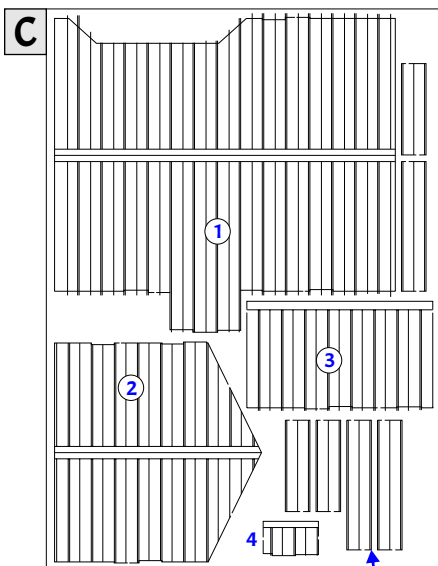
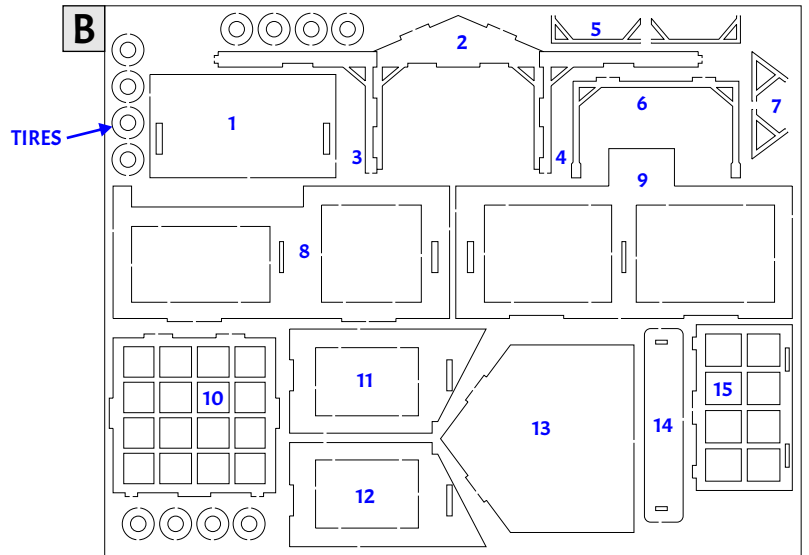
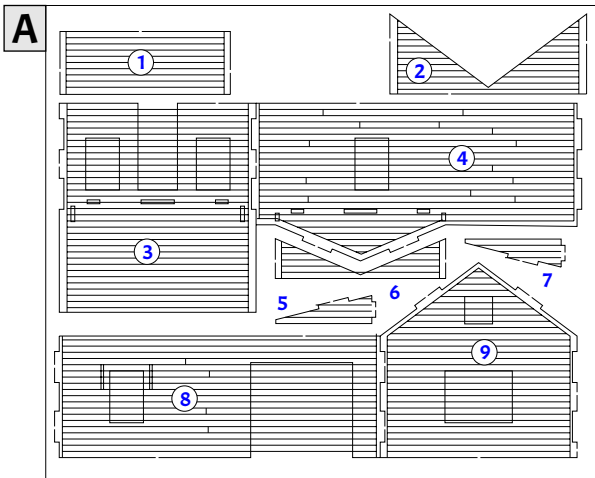
2. THE WINDOWS AND DOORS HAVE A DOUBLE STICK ADHESIVE BACKING TO ALLOW THEM TO BE APPLIED TO THE GLAZING. WE RECOMMEND THAT YOU PAINT THE WINDOWS AND DOORS WHILE THEY ARE STILL ATTACHED TO THE SPRUE. SPRAY PAINT WORKS BEST FOR THIS.

3. WE RECOMMEND AN ENAMEL OR LAQUER BASED PRIMER LIKE TAMIYA SURFACE PRIMER TO SEAL AND PROTECT THE PARTS. WE ALSO RECOMMEND VALLEJO BRAND ACRYLIC PAINTS FOR THIS KIT.

4. **SOME OF THE PARTS (MOST OF THE WALLS) HAVE BEEN LAMINATED WITH A PRINTED TEXTURE TO MAKE FINISHING THIS MODEL EASIER. THE TEXTURE IS PRINTED IN WATERBASE INK SO, WHILE THE PAPER AND PRINT IS STABLE FOR GLUEING AND PAINTING, CARE SHOULD BE TAKEN TO MINIMIZE THE USE OF WATER BASED PAINTS, STAINS AND WASHES THAT MIGHT DAMAGE THE PRINT.**

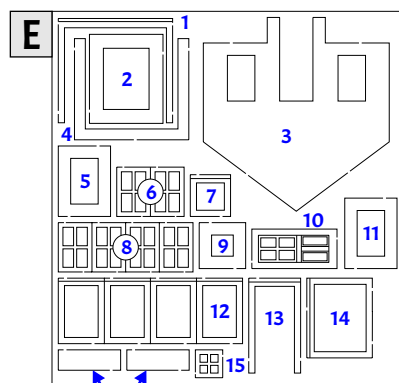
AS WITH ALL OF OUR KITS WE HOPE YOU ENJOY BUILDING AND FINISHING THIS MODEL.

LASER CUT SPRUES

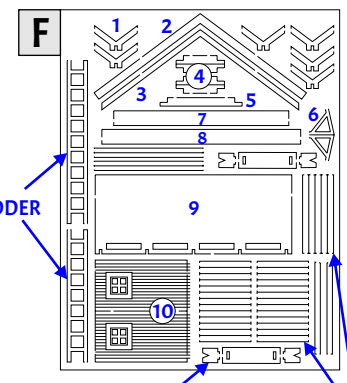


LOOSE TIN SHEETS

CORNER TRIM (CUT TO FIT) (OPTIONAL)



BENCH TOPS



LADDER

BENCH

BOARDS

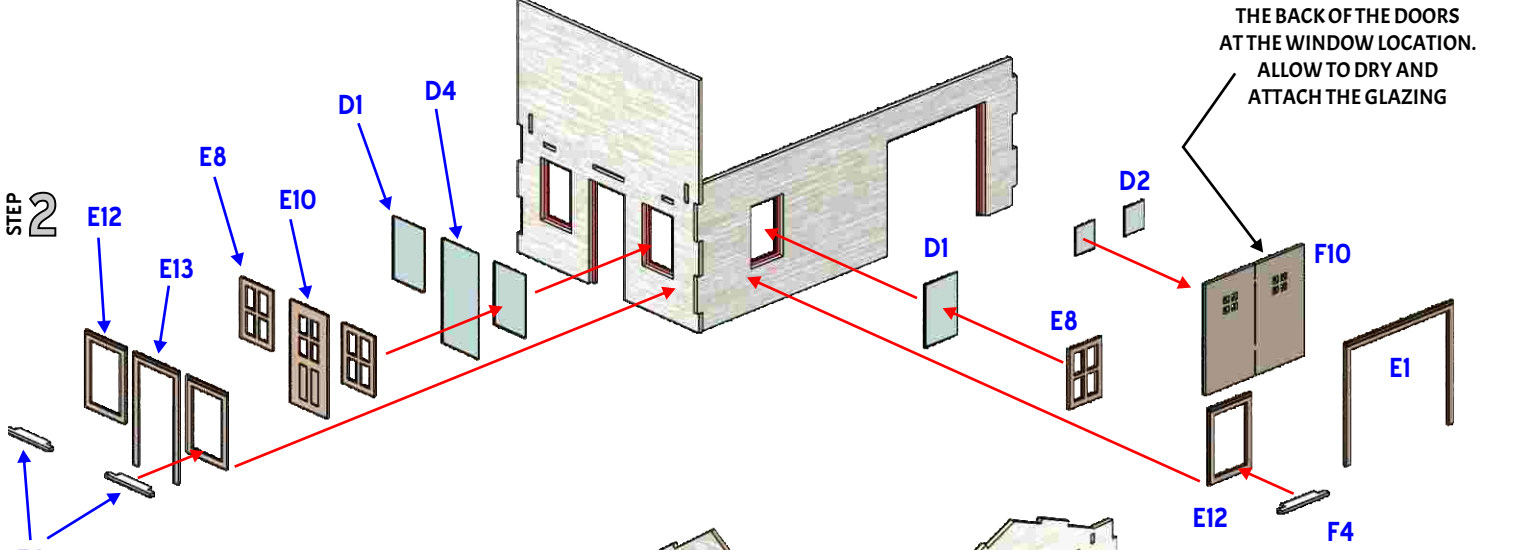
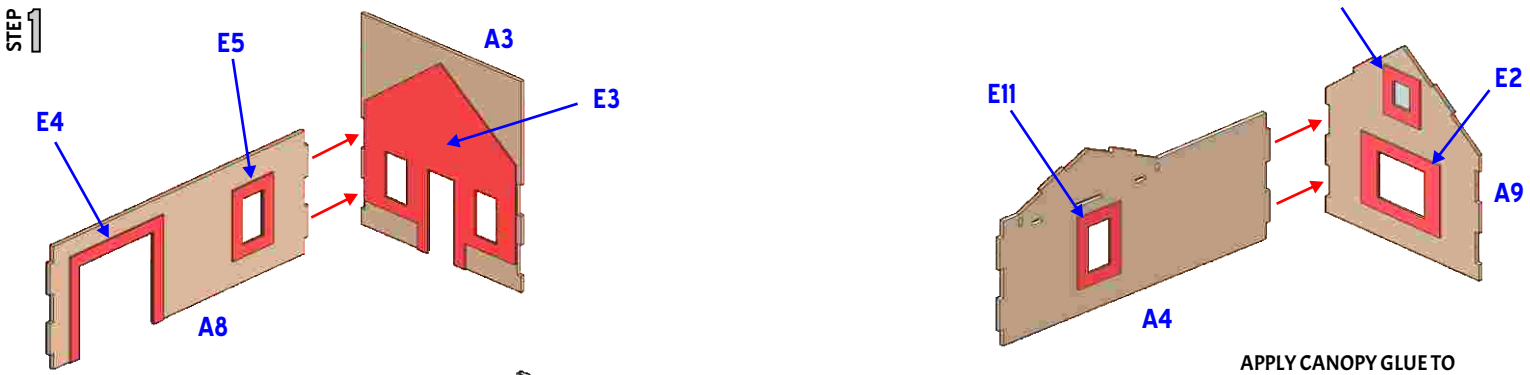
PARTS



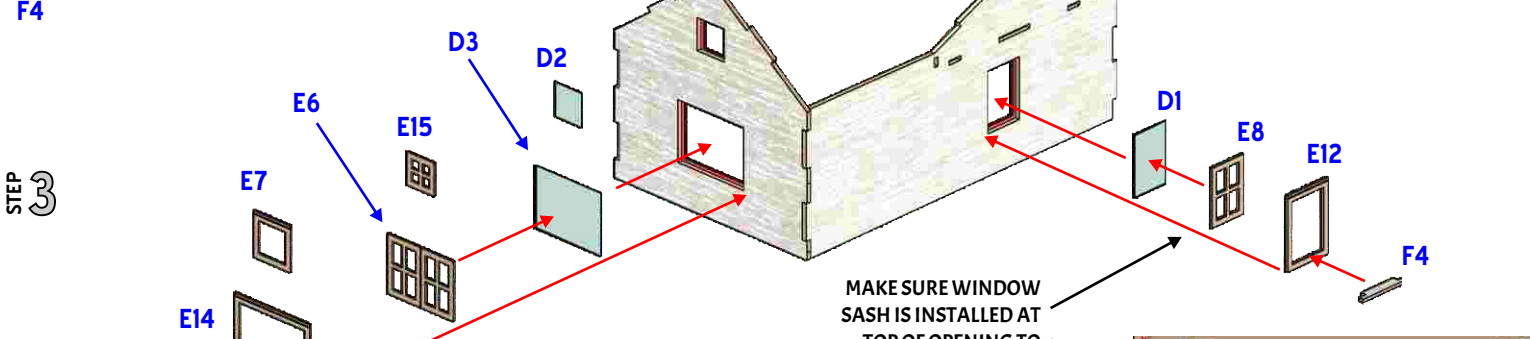
GRAPHICS



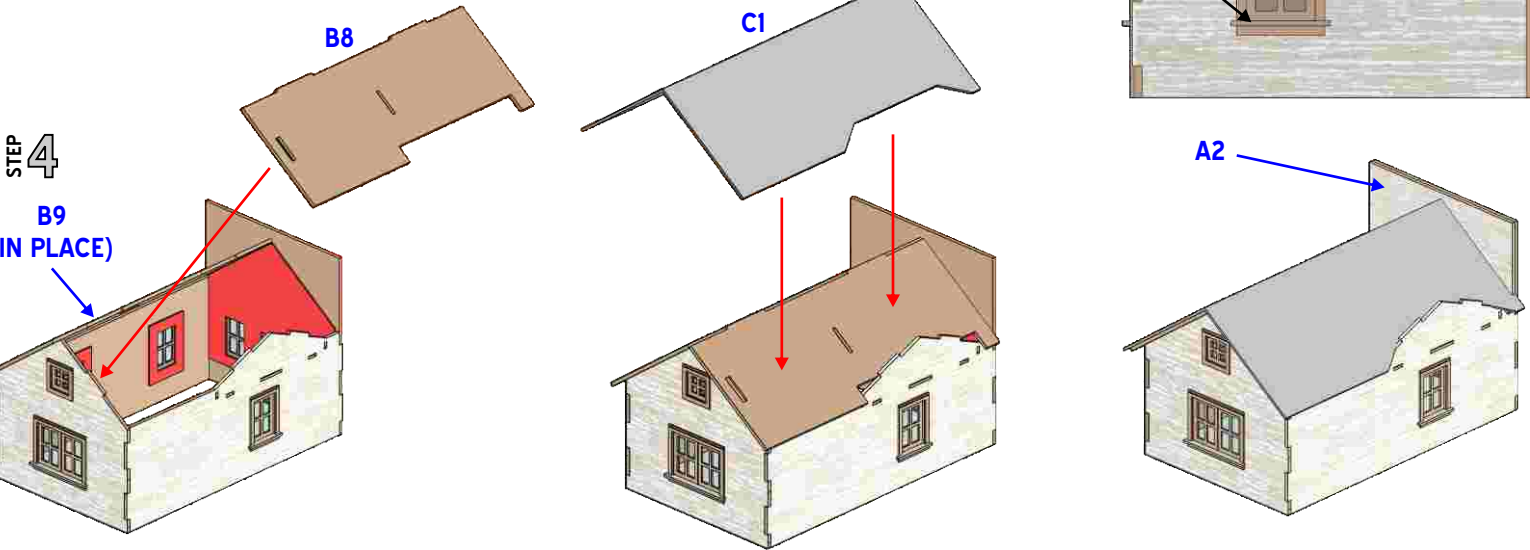
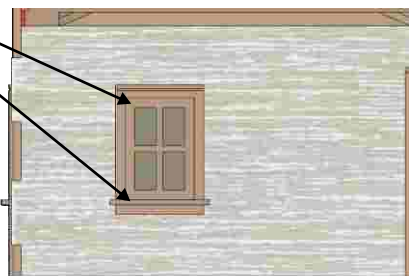
DECALS



APPLY CANOPY GLUE TO THE BACK OF THE DOORS AT THE WINDOW LOCATION. ALLOW TO DRY AND ATTACH THE GLAZING



MAKE SURE WINDOW SASH IS INSTALLED AT TOP OF OPENING TO ALLOW WINDOW SILL TO BE INSERTED BENEATH THE SASH.



STEP 5

