

PLEASE READ THROUGH ALL OF THE INSTRUCTION STEPS BEFORE STARTING. THE PARTS ARE DESIGNED TO FIT PRECISELY AND SOME ASSEMBLIES BUILD ON PREVIOUS STEPS. ALL PARTS MAY BE PAINTED BEFORE ASSEMBLY WHILE THEY ARE STILL ON THEIR SPRUES. ONCE THE WALL PARTS HAVE BEEN PAINTED, THEY CAN BE CUT FROM THE SPRUE. INSTALLING THE WINDOWS AND DOORS AND SOME OF THE TRIM MAY BE ADVANTAGEOUS AT THIS POINT. COMPLETED WALL SECTIONS CAN THEN BE ASSEMBLED PER THE INSTRUCTIONS.

1. BEFORE YOU BEGIN CONSTRUCTION, TAKE THE TIME TO BECOME FAMILIAR WITH THE PARTS AND INSTRUCTIONS. THE PARTS ARE NUMBERED TO MAKE IT EASIER TO FIND THEM ON THE SPRUES.
2. FOLLOWING THE INSTRUCTIONS IN ORDER WILL AID IN GETTING PARTS CORRECTLY POSITIONED - SOME PARTS RELY ON ACCURATE PLACEMENT OF A PRECEDING PART TO ALLOW IT TO FIT CORRECTLY.
3. THE WINDOWS AND DOORS HAVE A DOUBLE STICK ADHESIVE BACKING TO ALLOW THEM TO BE APPLIED TO THE GLAZING. WE RECOMMEND THAT YOU PAINT THE WINDOWS AND DOORS WHILE THEY ARE STILL ATTACHED TO THE PRET. SPRAY PAINT WORKS BEST FOR THIS.
4. WE RECOMMEND VALLEJO BRAND ACRYLIC PAINTS FOR THIS KIT.

AS WITH ALL OF OUR KITS WE HOPE YOU ENJOY BUILDING AND FINISHING THIS MODEL. PLEASE LET US KNOW OF ANY SUGGESTIONS OR IDEAS YOU MIGHT HAVE TO IMPROVE OUR KITS. PLEASE VISIT OUR WEBSITE AT WWW.SHOWCASEMINIATURES.NET TO ENSURE THAT YOU HAVE THE LATEST VERSION OF THE ASSEMBLY INSTRUCTIONS.

ROOF TILES

AC MOUNTING BRACKETS

EXTERIOR SIDING

MAIL BOX PAUS

PEWTER ACCESSORIES

GLAZING

BUILDING TRIM

EXTERIOR FRAME

VENT WINDOW

METER BASE (WIRE FOR MAST NOT INCLUDED)

WINDOW/DOOR PREL/STICK BACKING

AC MOUNTING ASSEMBLY

PARTS LIST

U

R **Q** **T**

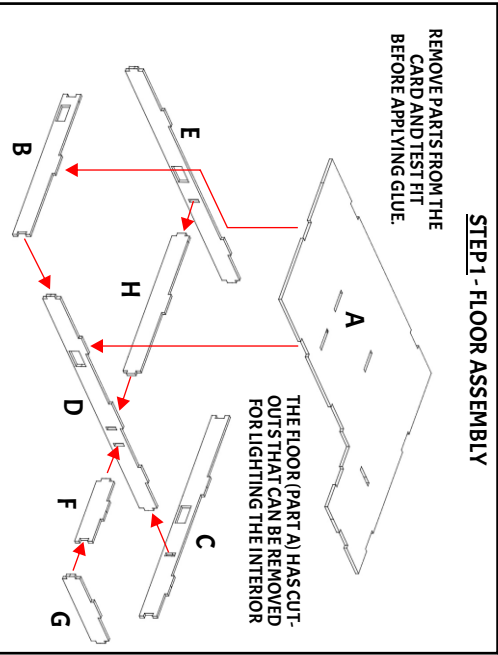
1 **2** **3** **4** **5** **6**

AA **BB** **CC** **DD** **EE** **FF** **GG** **HH**

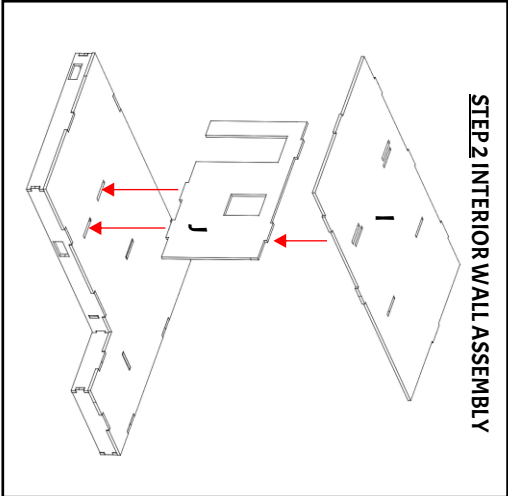
A **B** **C** **D** **E** **F** **G** **H** **I** **J** **K** **L** **M** **N** **O** **P** **S**

x2 **x4** **x4**

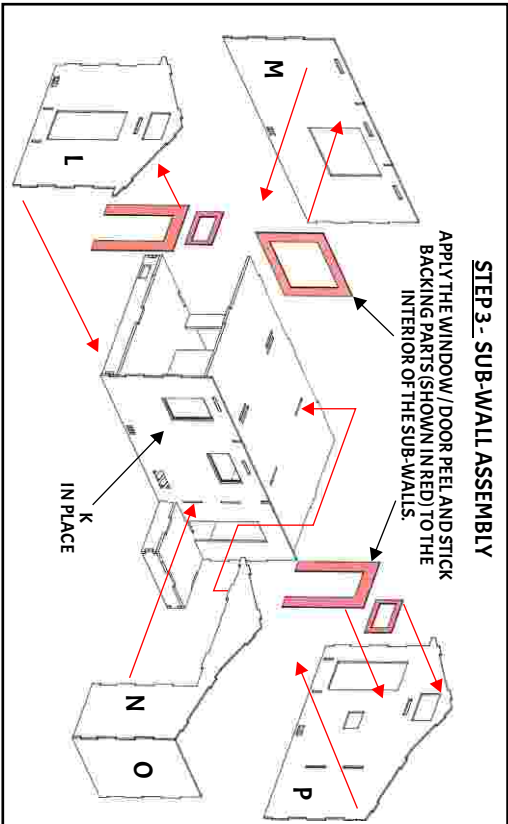
STEP 1 - FLOOR ASSEMBLY



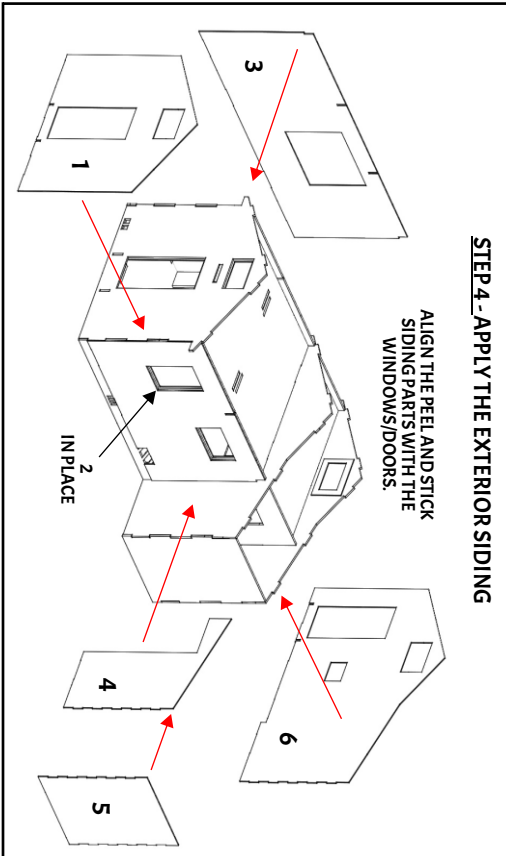
STEP 2 INTERIOR WALL ASSEMBLY



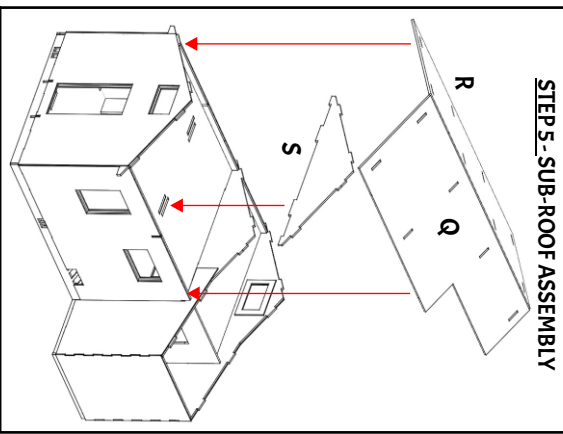
STEP 3 - SUB-WALL ASSEMBLY



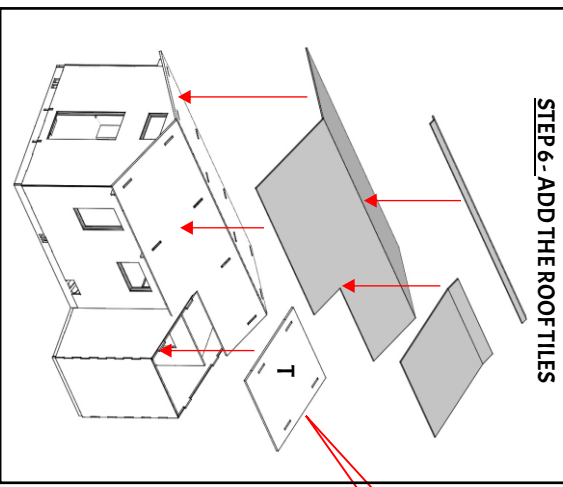
STEP 4 - APPLY THE EXTERIOR SIDING



STEP 5 - SUB-ROOF ASSEMBLY

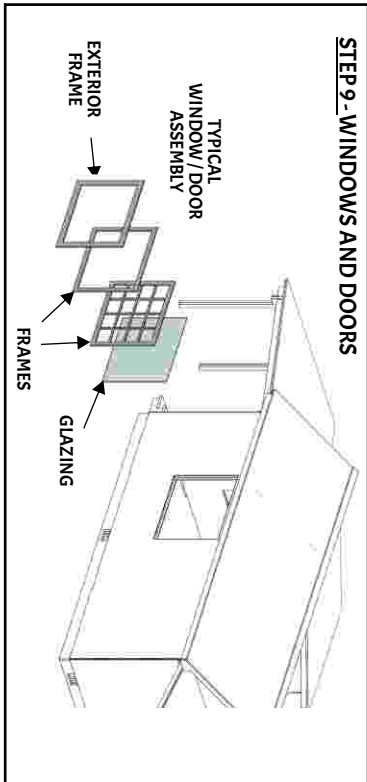


STEP 6 - ADD THE ROOF TILES

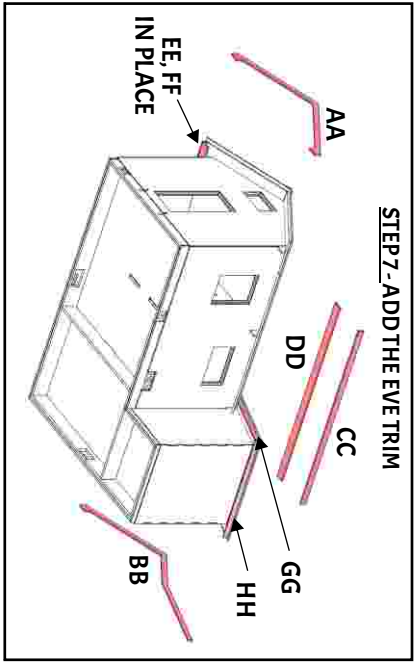


NOTE: INSTALL THE SUB-ROOF PART (D) AFTER INSTALLING THE MAIN ROOF TILES.

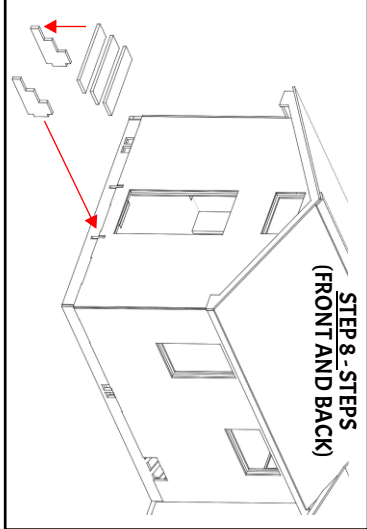
STEP 9 - WINDOWS AND DOORS



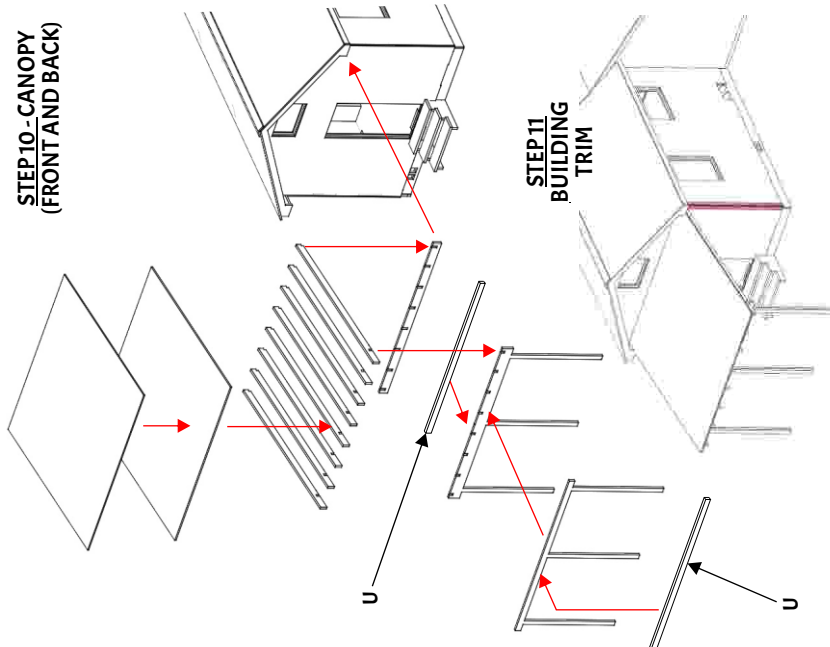
STEP 7 - ADD THE EVE TRIM



STEP 8 - STEPS (FRONT AND BACK)



STEP10-CANOPY
(FRONT AND BACK)



Painting Tips:

Peel and Stick siding can be spray or brush painted. If spraying, take care not to hold the can too close or apply too much paint so the engraved detail will remain.

Acrylic paint can also be brushed on.

The siding color used here is Seaglass from Americana.

