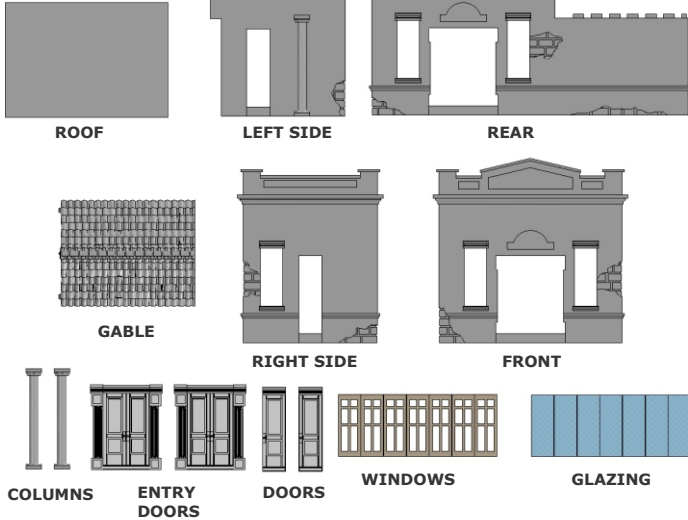
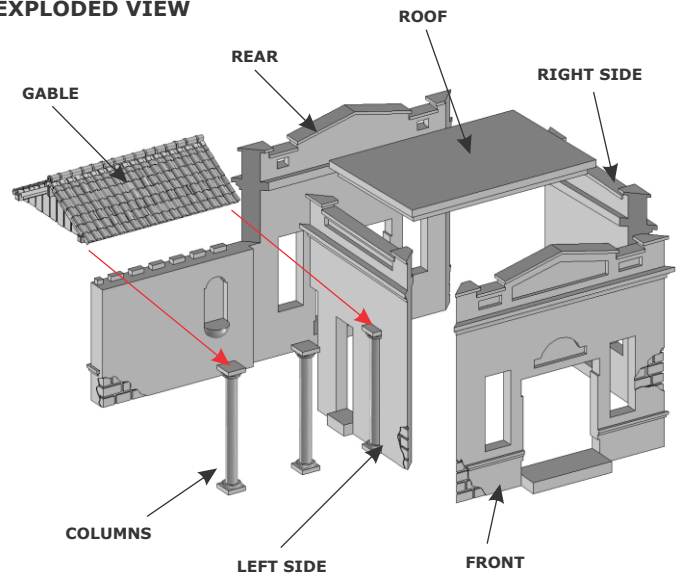


PARTS LIST



EXPLODED VIEW

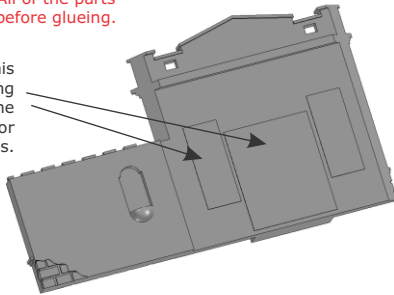


STEP 1 - Prepare the Parts

File and sand away any remaining resin flash from the casting process. The window and door openings are covered with thin layer of resin that can be easily filed away to expose the openings.

Test Fit
All of the parts before gluing.

File off this resin covering to expose the window and door openings.



About this Project

In the Fall of 2012 Walter Vail contacted me about Showcase Models doing some of my models for the N and HO scale market. Since those scales are really way too small for me to work in at this stage, I decided that his company would be a wonderful way for other model railroaders to enjoy my kits.

My own modeling started way back in about 1955 with an American Flyer set. I started building my own freight cars from scratch in wood from the Dollar Car series by H. O. Williams. Little did I know at the time that I would be working for him at Miami Model Builders in later years. Howie taught me a lot about miniatures.

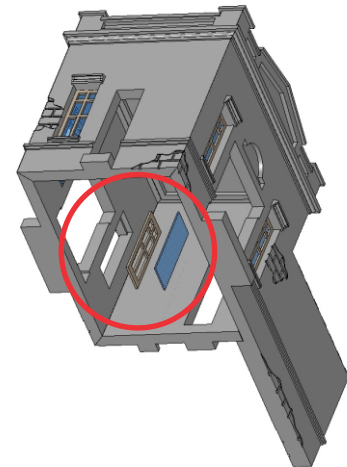
After I graduated from college I became an Advertising Art Director for several years before starting work in California for WED Enterprises, now known as Walt Disney Imagineering. I worked on many projects over the years including my first which was the redesign for the Disneyland Railroad when the Santa Fe decided to pull its sponsorship back in 1974. I have worked as a Graphic Designer for every park of Disney's until my retirement in 2000. While working at Disney I started Thomas A Yorke Ent. back in 1976. I have spent almost every year since then designing and manufacturing Hydrocal buildings, mostly in O scale.

In later years I sold off the original, pre-2000 kit rights to another manufacturer, but continued designing and manufacturing new items. These are the items that Walter is selectively reproducing through Showcase Miniatures. His first kit for the Frijole Flats Depot is reproduced very nicely in N scale. Of course I wouldn't expect any less from him. His modeling is superb and it captures my vision perfectly only in a smaller scale.

I am now devoting most of my time doing custom work and modeling my own small G_n15 empire in the basement.

.....Tom Yorke

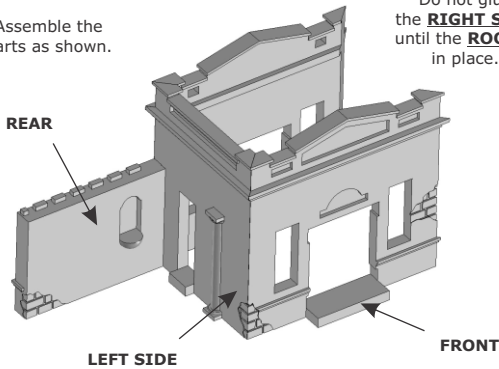
STEP 4 - Insert the Windows and Glazing from the INSIDE of the building



STEP 2 - Assemble the Walls

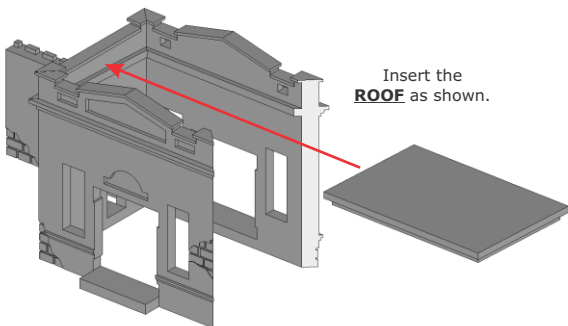
Assemble the parts as shown.

Do not glue the **RIGHT SIDE** until the **ROOF** is in place.

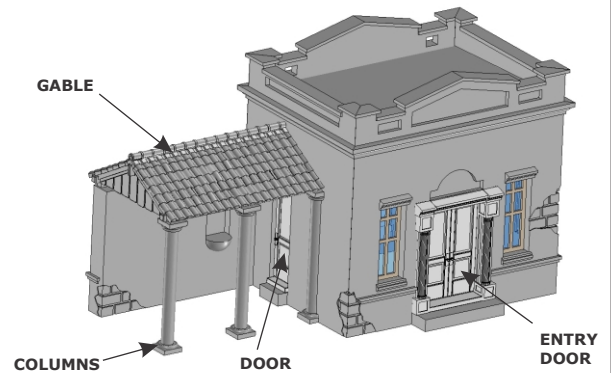


STEP 3 - Insert the Roof

Insert the **ROOF** as shown.



STEP 5 - Final Assembly



STEP 6 - Finishing

Our Suggestions...

1. Paint the entire assembly with Tesor's White Primer or your preferred brand of primer.
2. Use the Box Cover illustration as a guide for painting different areas of the Depot. Pastel colors mixed with White will give a washed / aged look.
3. Dilute Flat Black paint and allow it to 'flow' into the cracks and between the exposed bricks.
4. After all of the paint has dried, Dry Brush the surface using Flat White.
5. We used Earth-Tone pastel chalks to further age and 'dirty' the Depot.