

GETTING STARTED

PLEASE! READ THROUGH THE ENTIRE INSTRUCTIONS BEFORE BEGINNING ASSEMBLY. SOME PARTS MUST BE IN PLACE BEFORE OTHERS CAN BE ADDED. EXAMPLE: THE ROOF PART 1 IN STEP 6 MUST BE IN PLACE BEFORE THE SUB-ROOF PARTS FOR ROOF PART 2 CAN BE ADDED.

WE RECOMMEND THAT ALL PARTS BE PAINTED BEFORE ASSEMBLY AND CAN BE PRIMED (IF NECESSARY) AND PAINTED WHILE THEY ARE STILL ON THE SPRUES.

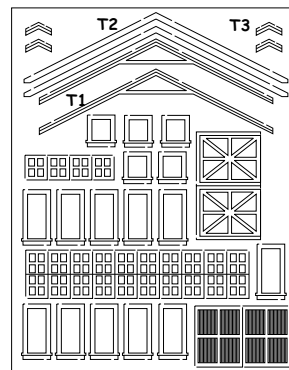
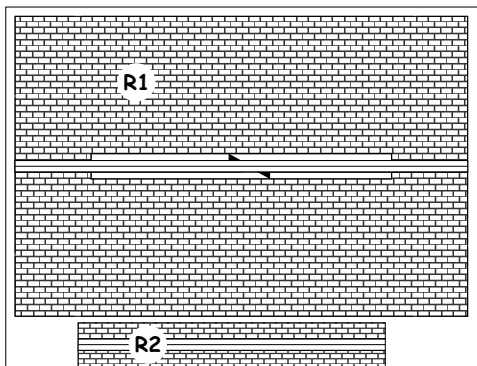
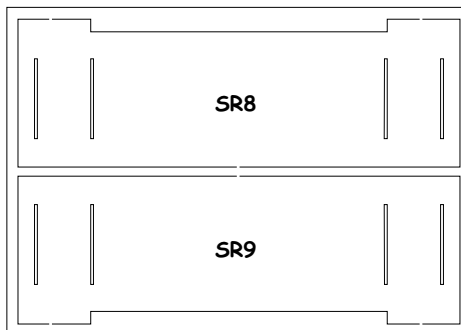
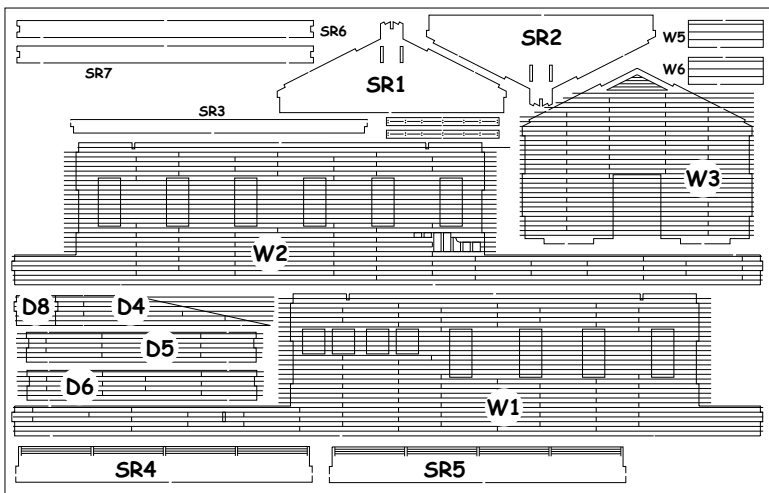
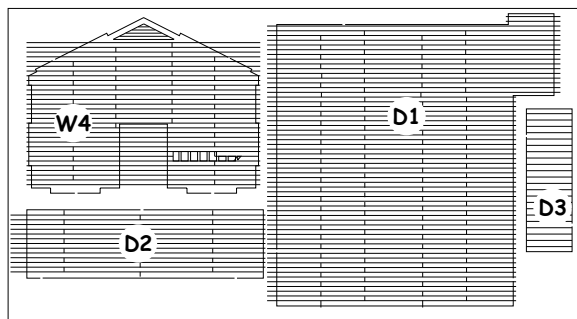
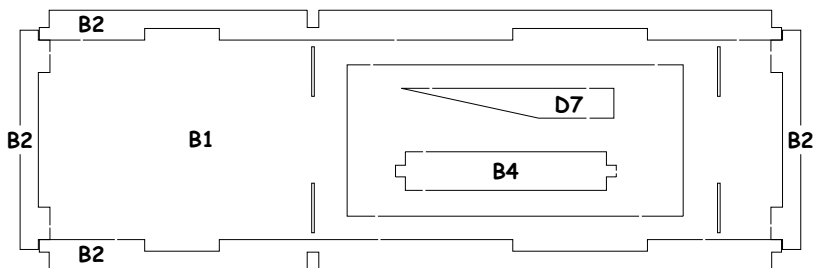
WE RECOMMEND VALLEJO BRAND OF ACRYLIC COLORS AND A THICK CA TYPE SUPER GLUE FOR CONSTRUCTION.

THE WINDOWS AND DOORS CAN ALSO BE PAINTED AND ATTACHED TO THE WALLS BEFORE ASSEMBLY. THE WINDOWS ARE CUT FROM A MATERIAL THAT HAS AN ADHESIVE BACKING. CLEAR FILM CAN BE USED FOR GLAZING - REMOVE THE BACKING FROM THE WINDOW AND ATTACH TO A CLEAN SHEET OF CLEAR FILM. CUT OUT AROUND THE WINDOW USING A SHARP HOBBY KNIFE.

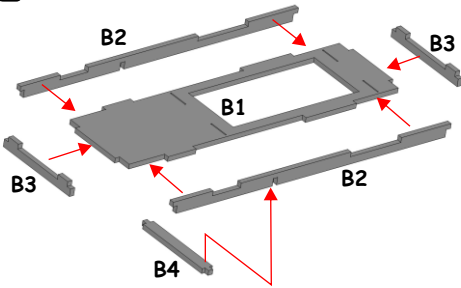
TEST FIT EACH PART BEFORE GLUEING - TRIM TO FIT IF NECESSARY.

PARTS LAYOUT

PARTS ARE MARKED AND CALLED OUT ON EACH STEP OF ASSEMBLY INSTRUCTIONS.

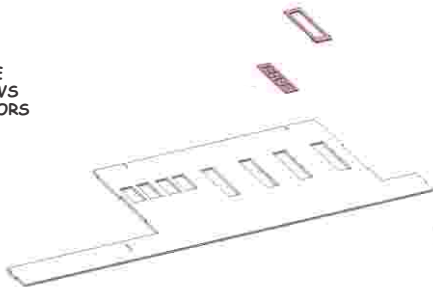


1 BUILD THE BASE

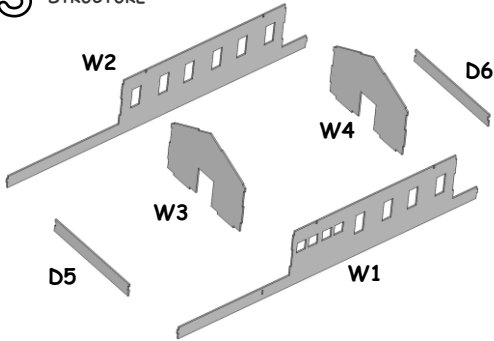


THE WINDOWS AND DOORS HAVE A DOUBLE STICK ADHESIVE BACKING TO ALLOW THEM TO BE APPLIED TO THIN, CLEAR PLASTIC (NOT SUPPLIED). CUT THEM OFF THE PLASTIC WITH A HOBBY KNIFE AND THEN ASSEMBLE. WE RECOMMEND THAT YOU PAINT THE WINDOWS AND DOORS WHILE THEY ARE STILL ATTACHED TO THE FRET. SPRAY PAINT WORKS BEST FOR THIS.

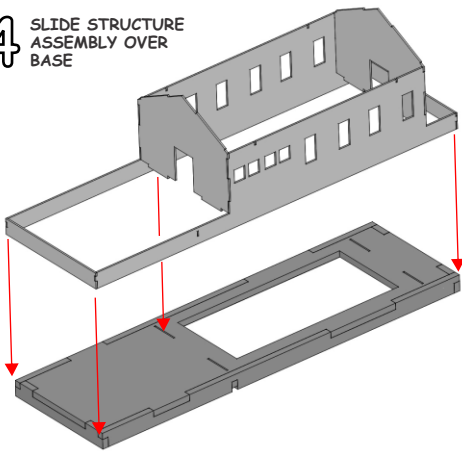
2 ADD THE WINDOWS AND DOORS



3 BUILD THE STRUCTURE

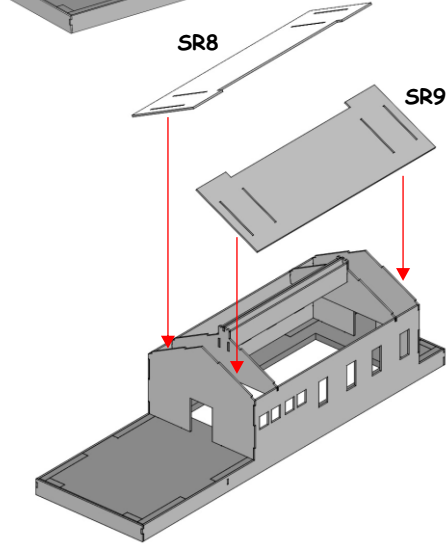
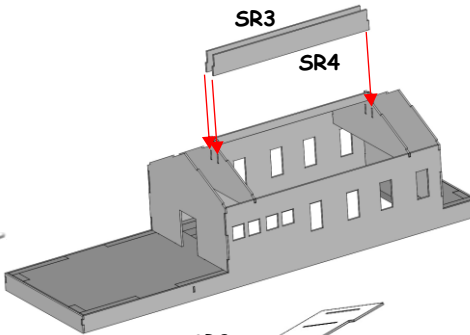
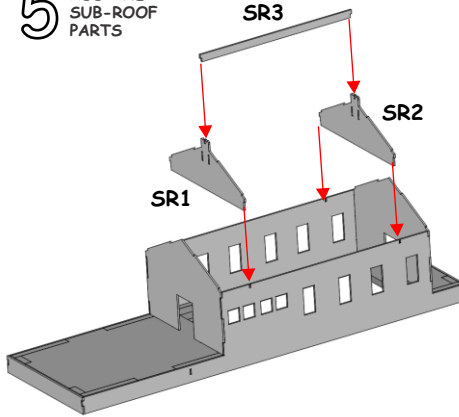


4 SLIDE STRUCTURE ASSEMBLY OVER BASE



USE THE BASE AS BOTH A SUPPORT FOR THE MODEL AND A GUIDE FOR ASSEMBLY

5 ADD THE SUB-ROOF PARTS



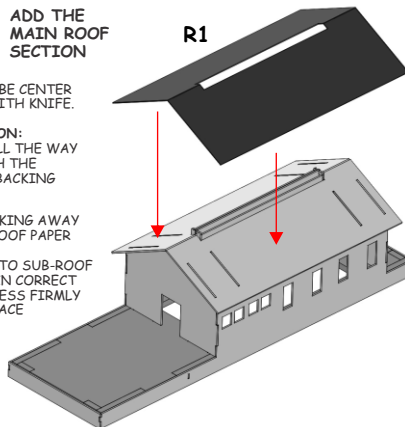
6 ADD THE MAIN ROOF SECTION

LIGHTLY SCRIBE CENTER RIDGE LINE WITH KNIFE.

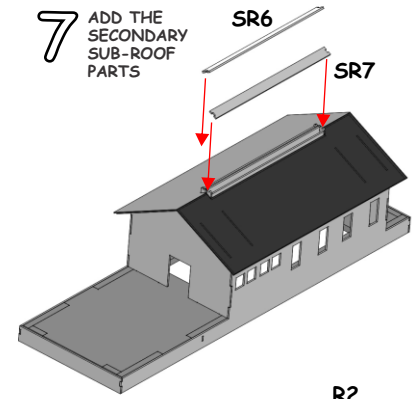
CAUTION: DO NOT CUT ALL THE WAY THROUGH THE ADHESIVE BACKING

PEEL THE BACKING AWAY FROM THE ROOF PAPER

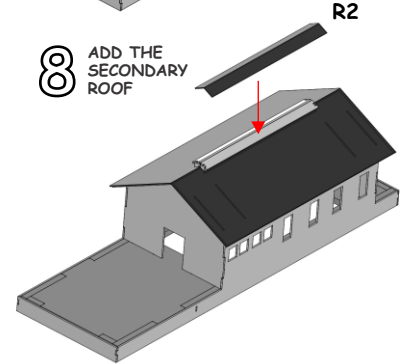
APPLY LIGHTLY TO SUB-ROOF AND, WHEN IN CORRECT POSITION, PRESS FIRMLY IN PLACE



7 ADD THE SECONDARY SUB-ROOF PARTS



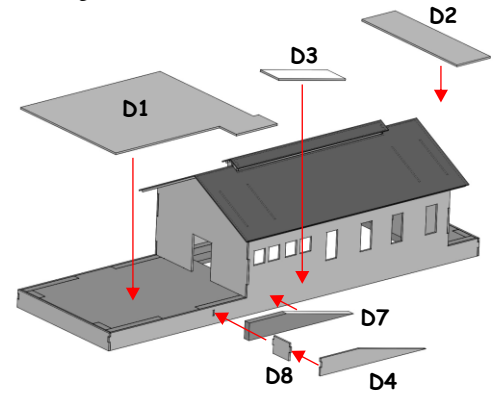
8 ADD THE SECONDARY ROOF



LIGHTLY SCRIBE CENTER RIDGE LINE WITH KNIFE.

CAUTION: DO NOT CUT ALL THE WAY THROUGH THE ADHESIVE BACKING. PEEL THE BACKING AWAY FROM THE ROOF PAPER. APPLY LIGHTLY TO SUB-ROOF AND, WHEN IN CORRECT POSITION, PRESS FIRMLY IN PLACE

9 BUILD THE DECK



10 ADD THE TRIM

