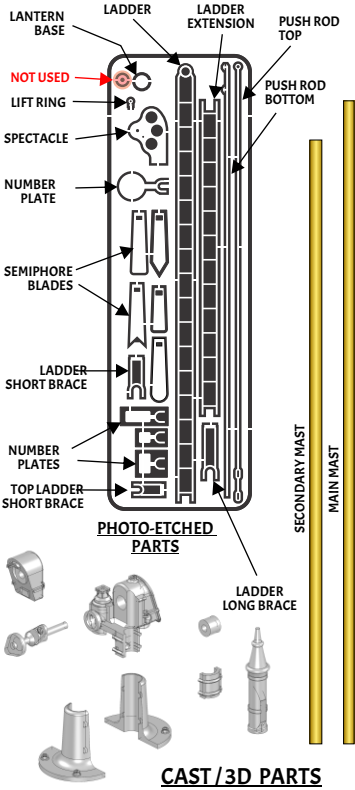
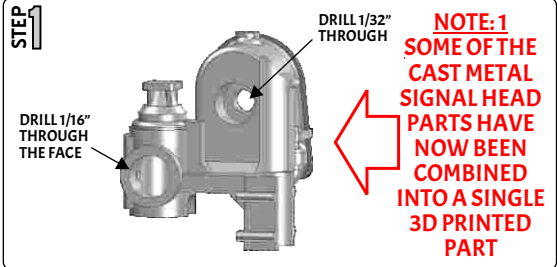


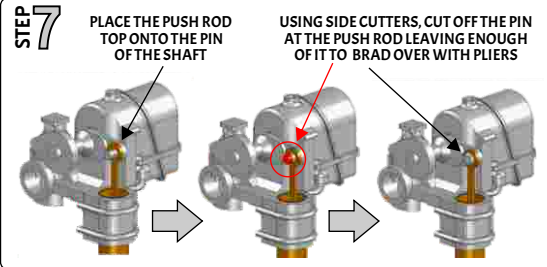
PARTS



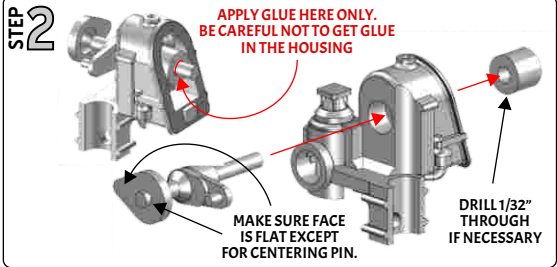
STEP 1



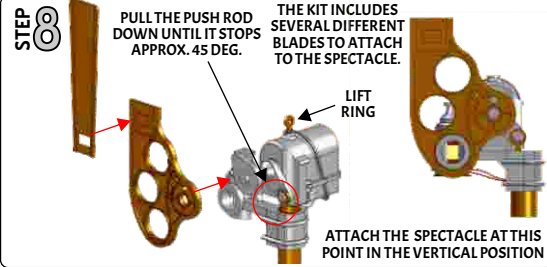
STEP 7



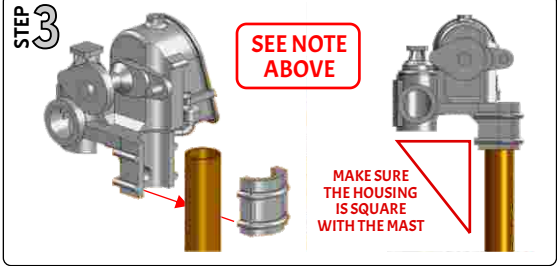
STEP 2



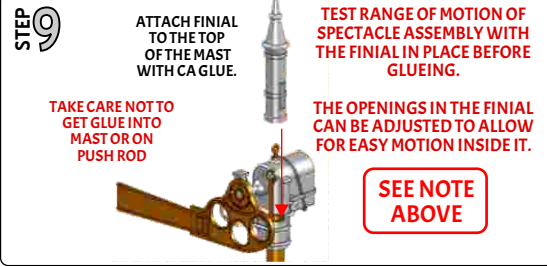
STEP 8



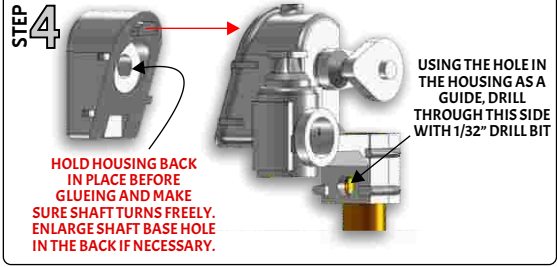
STEP 3



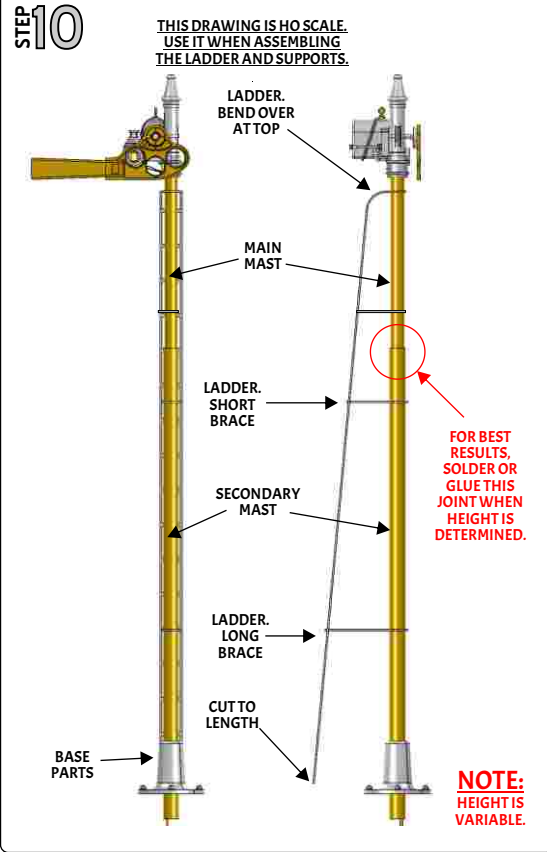
STEP 9



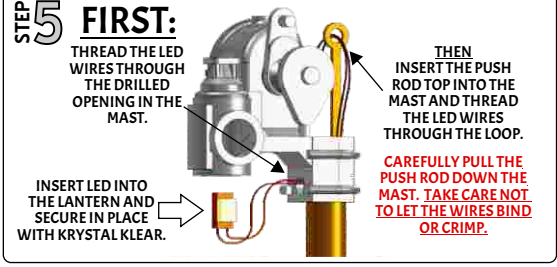
STEP 4



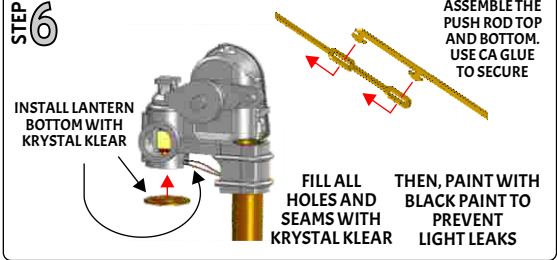
STEP 10



STEP 5



STEP 6



IMPORTANT!
READ THROUGH ENTIRE ASSEMBLY AND TEST FIT PARTS BEFORE BEGINNING!

Tools You May Need:

- 1/32" Drill Bit
- 1/16" Drill Bit
- Needle Files
- Single Edge Razor Blade
- Dremel Tool
- CA Type Super Glue
- Kristal Klear

Red, Green and Yellow Transparent Paint

Clean and Debur all Parts

before beginning assembly. Some parts may need to be opened with a drill bit.

Mark the locations

of the parts on the mast using the Diagram provided.

PAINTING

The kit should be built in two assemblies ; The Spectacle and Blade as one assembly and the main signal assembly.

Prime and paint the spectacle and blade assembly then fill the roundel openings with micro Kristal Klear and (when thoroughly dry) use a transparent paint (like Vallejo) for the roundel color. The transparent paints can be easily mixed together to allow an unlimited variation to the roundel color.

We suggest priming the finished assembly with a laquer based primer (Tamiya). The LED will need to be masked before painting. One of the easiest ways to mask the LED is to put a small amount of modeler's clay in the lantern opening. Don't press the clay too far into the signal head or it may be difficult to remove once the paint is dry.

Transparent Paint Sample in Three Colors.



Item Number 0019

To create a working Semaphore Signal, we recommend using the Tam Valley Dual 3-Way Servo Controller. Tam Valley can also supply small servos for animating the Semaphore. Instructions for the controller will show you how to attach the PUSH ROD to the servo arm and adjust the movement. Follow the instructions included with the Tam Valley controller.