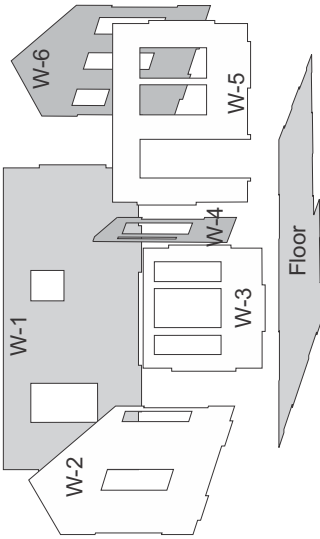
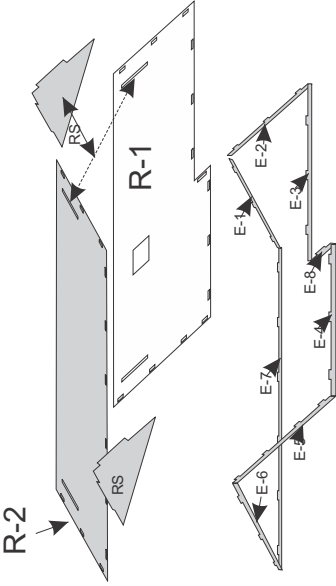


# Step 1

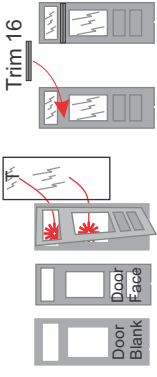


# Step 2



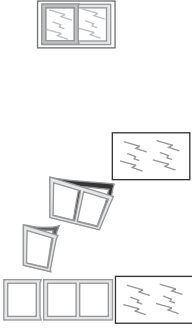
# Step 3

## Door layer assembly order

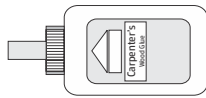


Peel off adhesive backing paper from door face. Join door face, with the adhesive down to door blank. Apply a small amount of glue to the back side of the wall around where the door opening is. This will secure the door in place when you apply it from the back side.

## Window layer assembly order

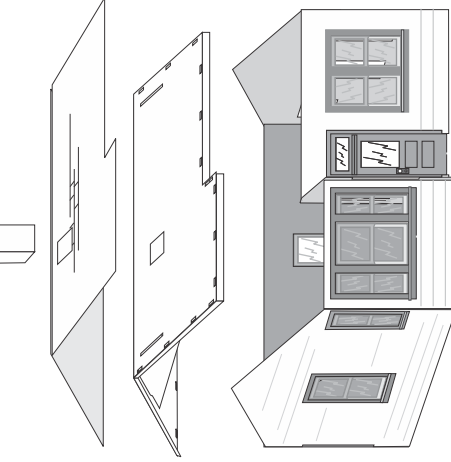


For best adhesive results use **Carpenter's wood glue**. Use a tooth pick to apply

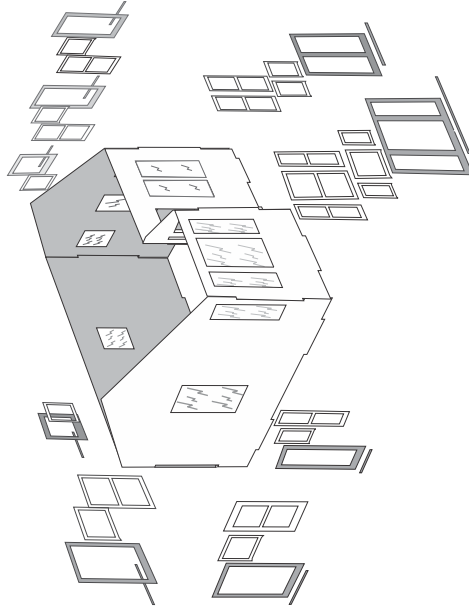


### Paint Colors

Walls: Colonial Yellow  
 Trim: Tan  
 Window frames: White



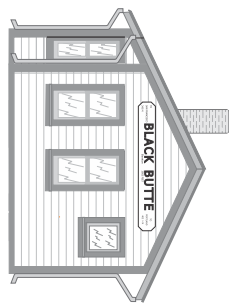
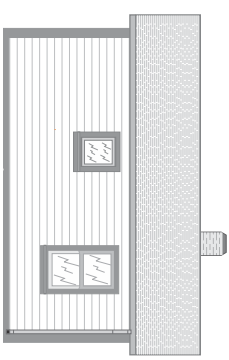
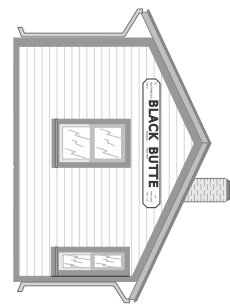
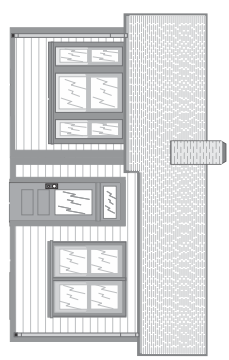
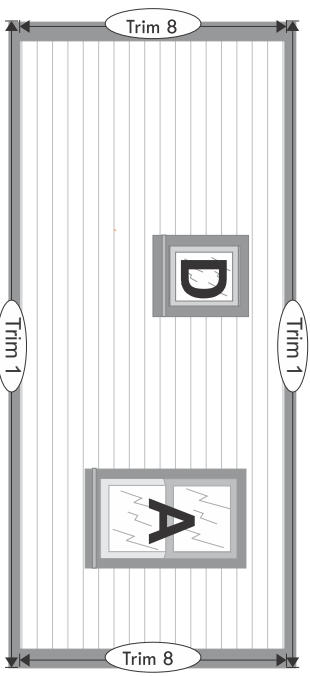
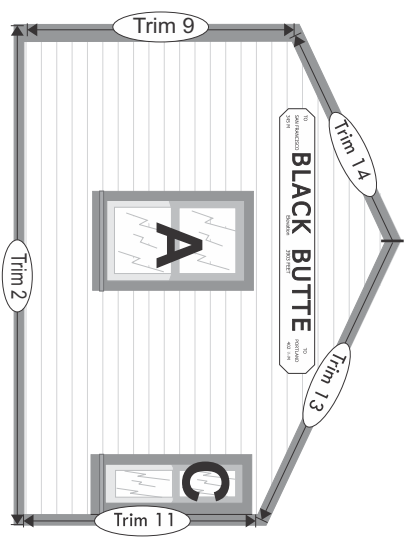
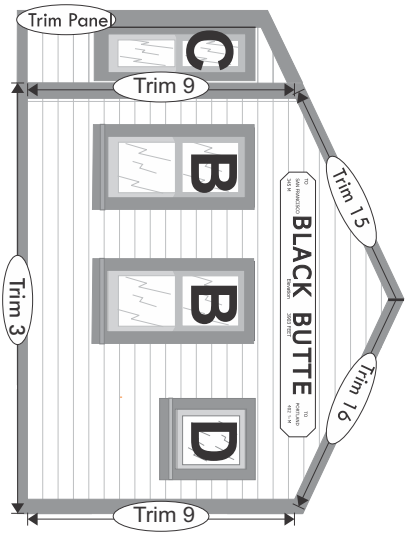
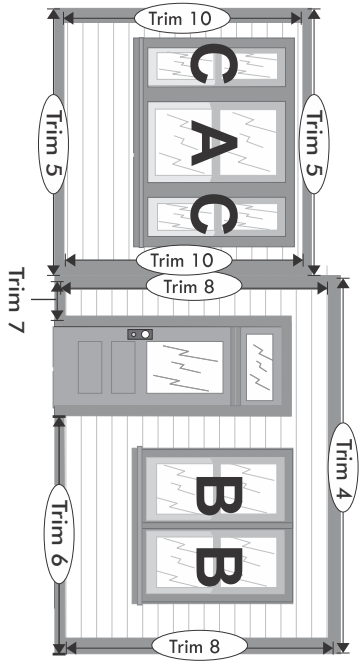
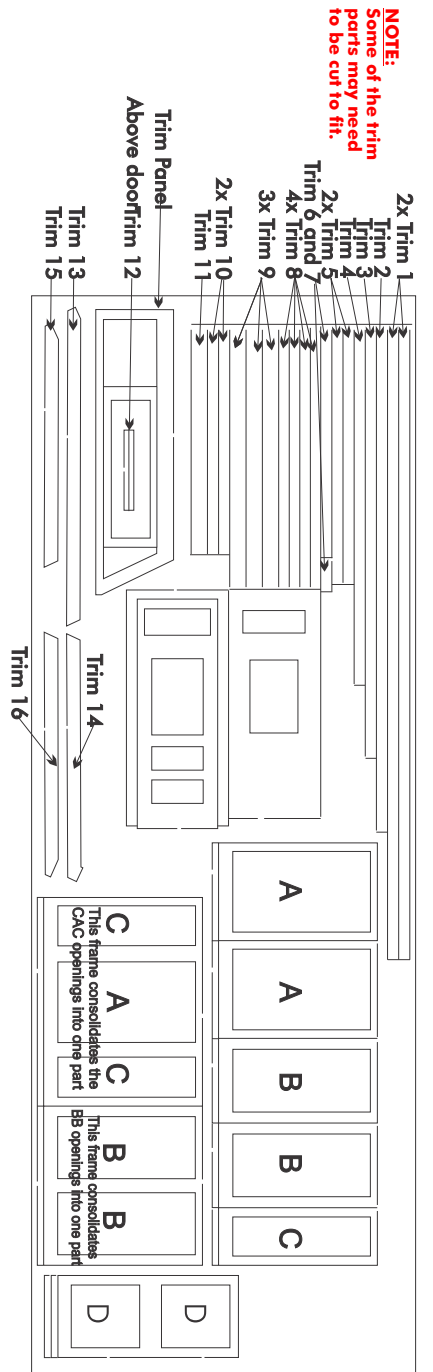
## Walls, glazing, windows, trim and sills



Showcase Miniatures Kit #2006

Assemblies view

Black Butte T/O Office



Showcase Miniatures Kit#2006

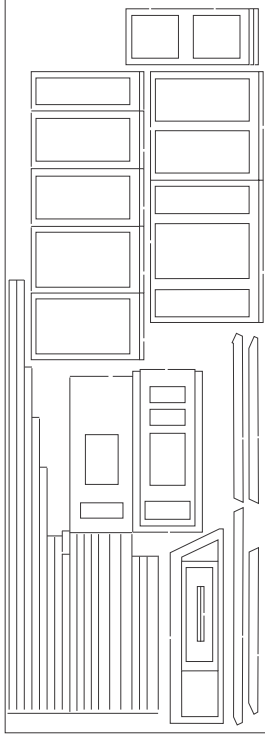
Window trim sills and wall trim

Black Butte T10office

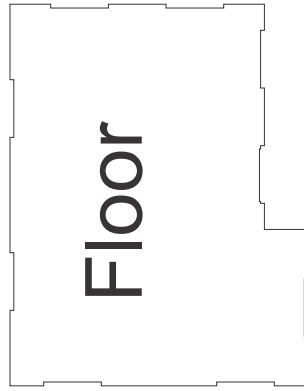
### Walls



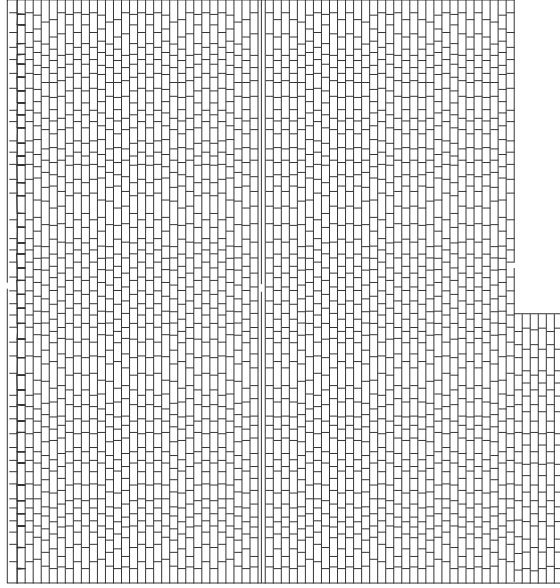
### Window and wall trim



### Floor



### Roof Paper Shingles



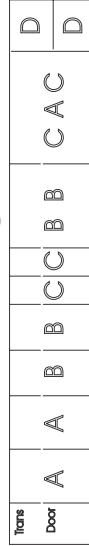
### Window Frames



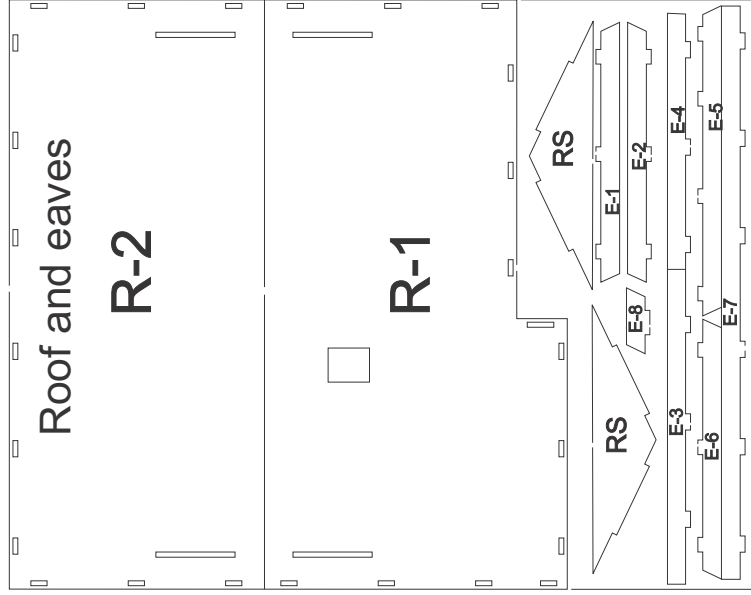
### Decals



### Glazing



### Roof and eaves



Showcase Miniatures Kit#2006

Parts Inventory

Black Butte T/Office

## Black Butte train order office

Before beginning the assembly of your kit, look at the parts inventory drawings (back of this page) and identify the parts panels in your kit. To make parts identification easier, we have cut the parts so that they stay in their respective panels and do not shift during transportation and handling. This may cause the need to assist releasing the parts when you get the kit. An Xacto knife (or equivalent) with a sharp #11 blade is useful in helping you to do this. Draw the hobby knife around the perimeter of the part to release it. When the part is removed from the panel, carefully remove any burs by sanding or clipping away. Finally, you will need some wood glue and a flat surface to build on.

### **Page 1.** Assemblies view steps 1-3

1. Assemble the walls and floor. Note that the scribed siding is to be exposed on the outside of the model.
2. Assemble the roof. The parts are identified in the relationship to their respective placement in the assembly.
3. This illustration shows the doors and windows in a layer sequence. The window frames have an adhesive back. Window frames A,B and C are of the sliding type, peel back the adhesive protective paper then apply the smaller part at the top outside of the frame assembly.

Remove the adhesive protective backing from the roof paper shingles. Apply the roof, next install the chimney.

Review the illustration showing the windows and related parts. Then go on to page 2.

### **Page 2.** Window trim, sills and wall trim placement

*Applying the glazing and window frames:* On the inside of the structure apply a light bead of glue around the backside of the window opening. Then carefully install the related glazing to it's related A,B,C,or D openings. Next assemble the window frames, by peeling back the protective backing from the adhesive. Make sure the glue is dry on the glazing then from the front of the structure insert the window frame. Press the frame firmly against the glazing while supporting the glazing from the back with your finger or thumb.

*Applying the horizontal and vertical wall trim boards:* In the illustration you will find trim numbers assigned to their related locations on the model. Familiarize yourself using the cross-referenced parts panel locations to wall placement locations. Next apply the parts to the model as shown in the illustration.

*Applying the window trim:* The window trim is identified by its opening size lettered A,B,C,and D. The glazing and window frames use the same identified openings. Please note before assembling the model that the glazing and window trim item BB and CAC consolidated the openings into one part.

*Applying the sills:* Just below the window trim opening install the related window-sills (they are located on the bottom of each window trim piece)

Carefully cut out the Black Butte stickers identification board. They are to be located on each side of the structure. You can now install the roof

Thank you for purchasing this model. I hope that you enjoy it for a long time. To find out what new projects we are working on go to our web site [www.showcaseminiatures.net](http://www.showcaseminiatures.net) or drop us a line at:

Showcase Miniatures  
13536 County Road 45  
Tuskegee, AL 36083  
334-750-3276  
d@showcaseminiatures.net