

GETTING STARTED

**PLEASE !! READ THROUGH ALL OF THE INSTRUCTION STEPS BEFORE STARTING. THE PARTS ARE DESIGNED TO BE PRECISE FITTING AND SOME ASSEMBLIES BUILD ON PREVIOUS STEPS.**

ALL PARTS MAY BE PAINTED BEFORE ASSEMBLY WHILE THEY ARE STILL ON THEIR SPRUES. ONCE THE WALL PARTS HAVE BEEN PAINTED, THEY CAN BE CUT FROM THE SPRUE. INSTALLING THE WINDOWS AND DOORS AND SOME OF THE TRIM MAY BE ADVANTAGEOUS AT THIS POINT. COMPLETED WALL SECTIONS CAN THEN BE ASSEMBLED PER THE INSTRUCTIONS.

1. BEFORE YOU BEGIN CONSTRUCTION, TAKE THE TIME TO BECOME FAMILIAR WITH THE PARTS AND INSTRUCTIONS. THE PARTS ARE NUMBERED AND COLOR CODED TO MAKE IT EASIER TO FIND THEM ON THE SPRUES.

2. FOLLOWING THE INSTRUCTIONS IN ORDER WILL AID IN GETTING PARTS CORRECTLY POSITIONED - SOME PARTS RELY ON ACCURATE PLACEMENT OF A PRECEDING PART TO ALLOW IT TO FIT CORRECTLY.

3. THE WINDOWS AND DOORS HAVE A DOUBLE STICK ADHESIVE BACKING TO ALLOW THEM TO BE APPLIED TO THE GLAZING. WE RECOMMEND THAT YOU PAINT THE WINDOWS AND DOORS WHILE THEY ARE STILL ATTACHED TO THE FRET. SPRAY PAINT WORKS BEST FOR THIS.

4. WE RECOMMEND VALLEJO BRAND ACRYLIC PAINTS FOR THIS KIT.

AS WITH ALL OF OUR KITS WE HOPE YOU ENJOY BUILDING AND FINISHING THIS MODEL. PLEASE LET US KNOW OF ANY SUGGESTIONS OR IDEAS YOU MIGHT HAVE TO IMPROVE OUR KITS.

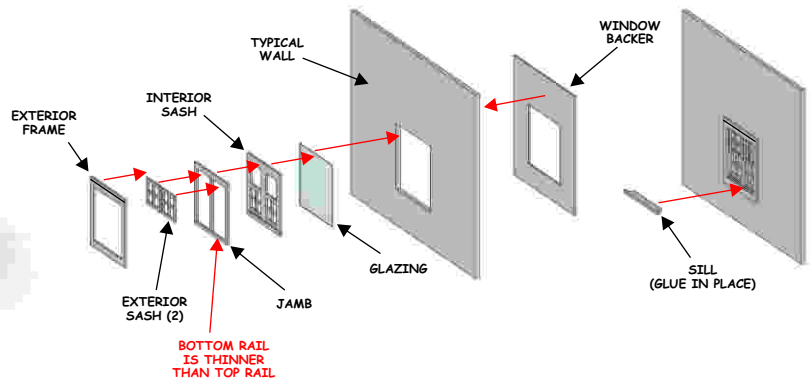
PLEASE VISIT OUR WEBSITE AT [WWW.SHOWCASEMINIATURES.NET](http://WWW.SHOWCASEMINIATURES.NET) TO ENSURE THAT YOU HAVE THE LATEST VERSION OF THE ASSEMBLY INSTRUCTIONS.

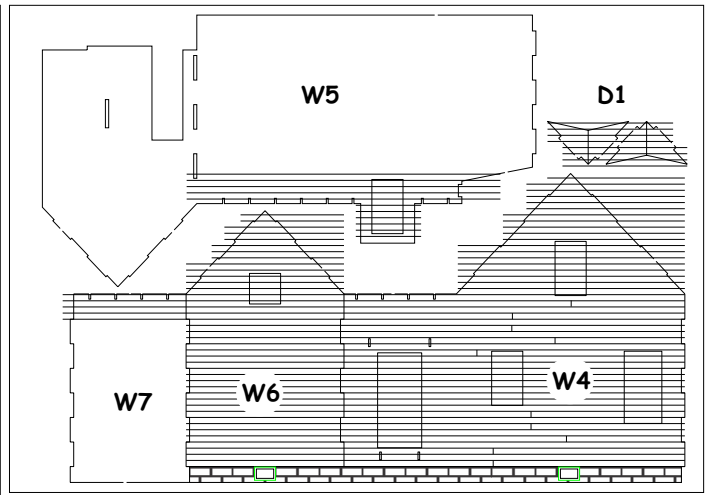
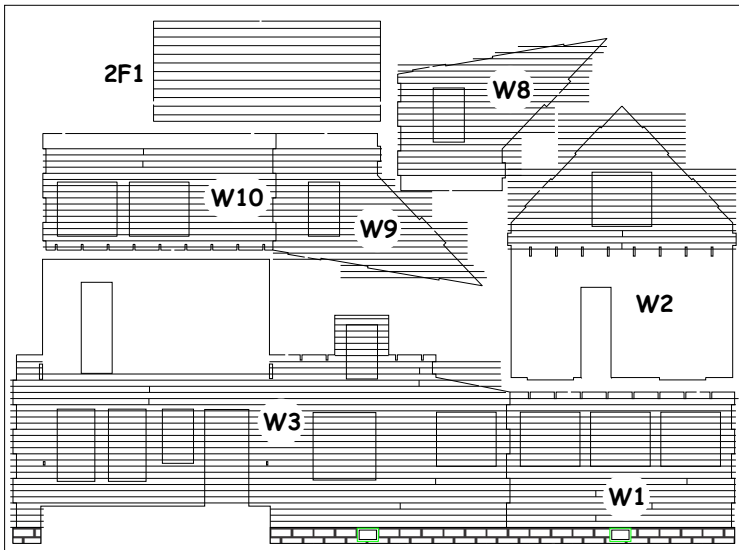


MODEL BUILT BY  
JASON JENSEN

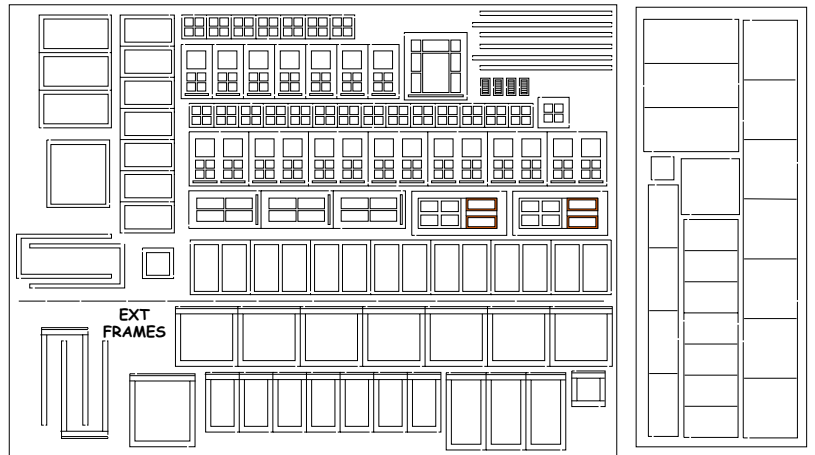
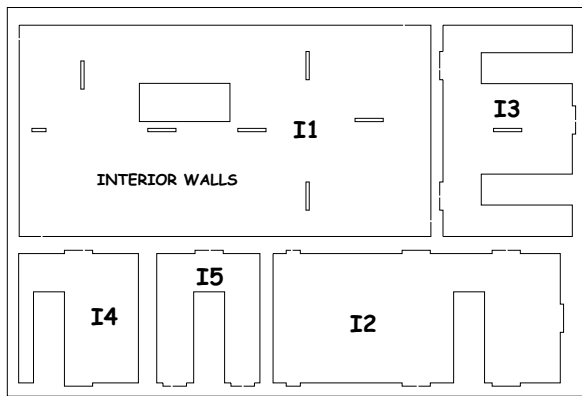
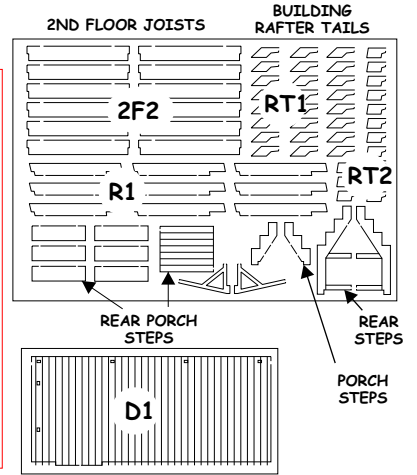
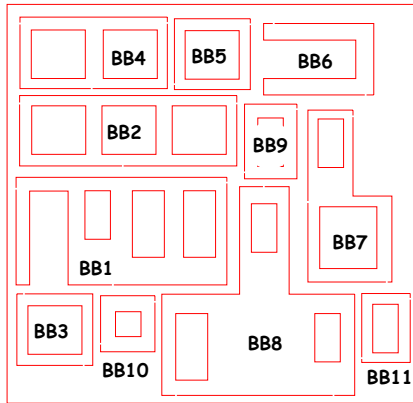
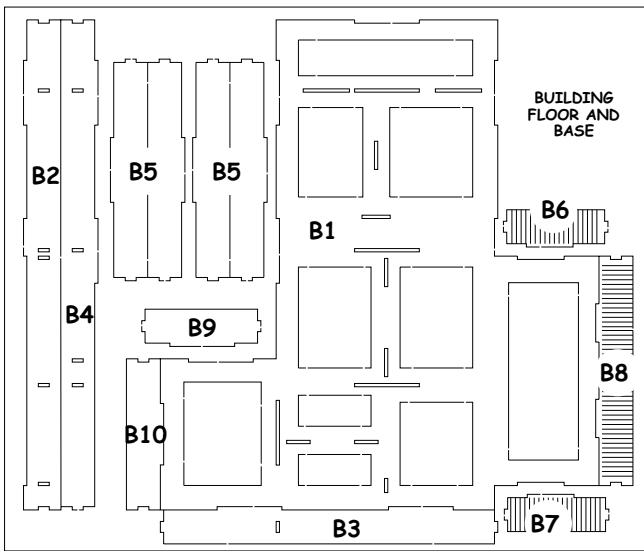


TYPICAL WINDOW / DOOR  
PEEL AND STICK ASSEMBLY

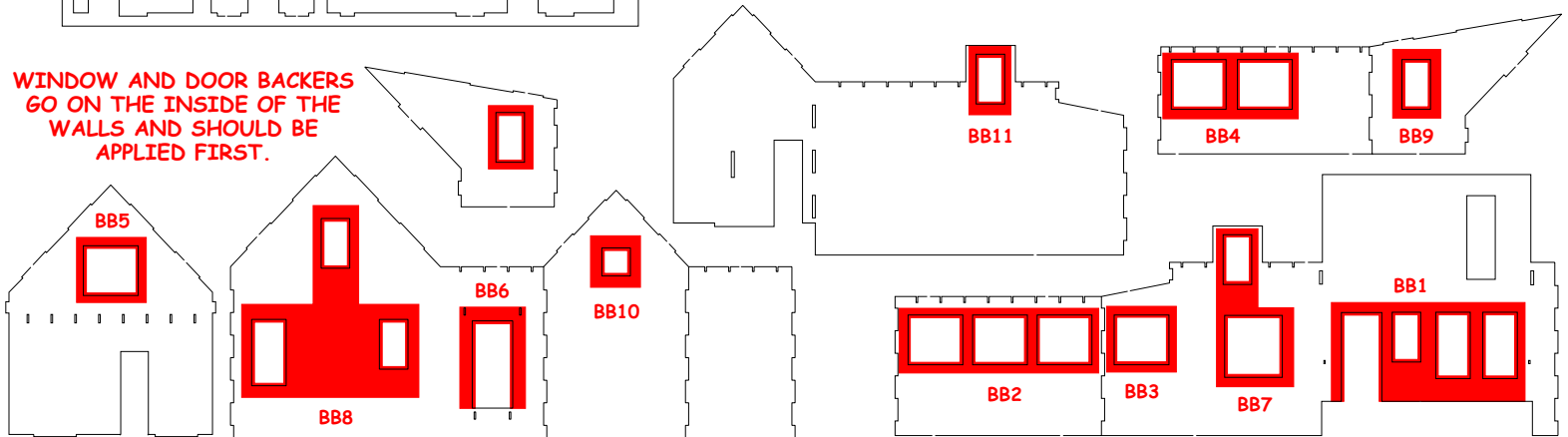


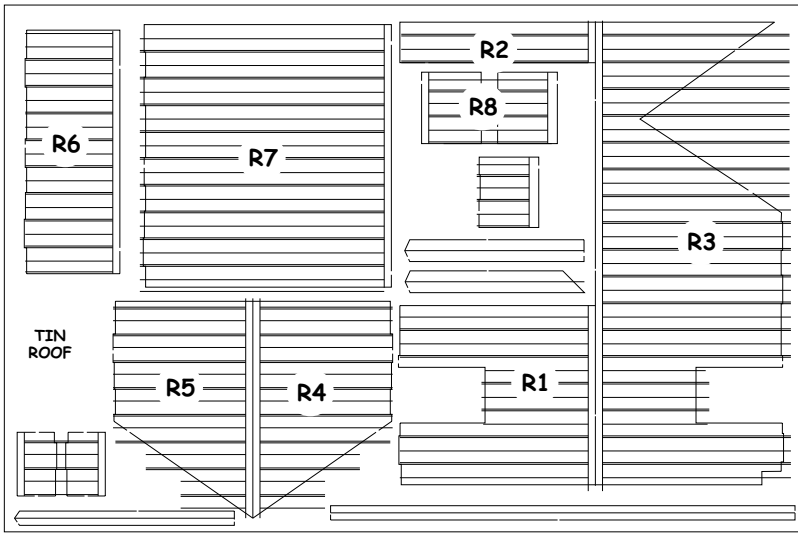


INTERIOR WINDOW/DOOR BACKER  
(SEE APPLICATION BELOW)

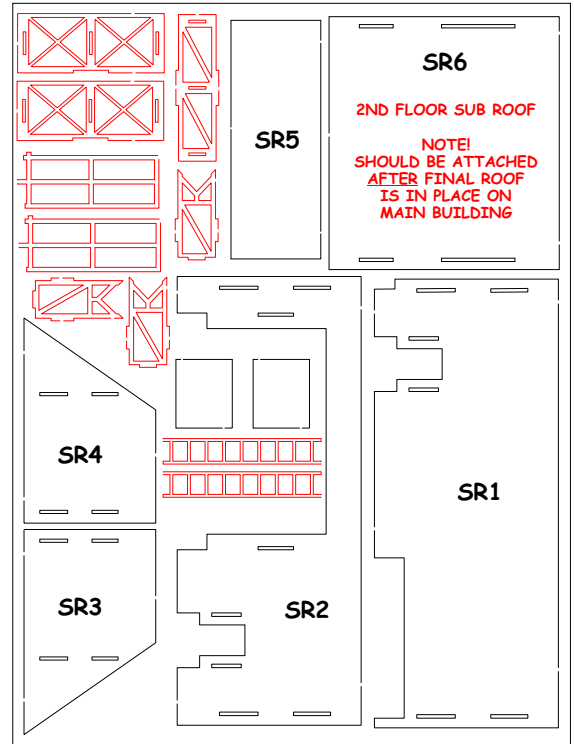


WINDOW AND DOOR BACKERS  
GO ON THE INSIDE OF THE  
WALLS AND SHOULD BE  
APPLIED FIRST.

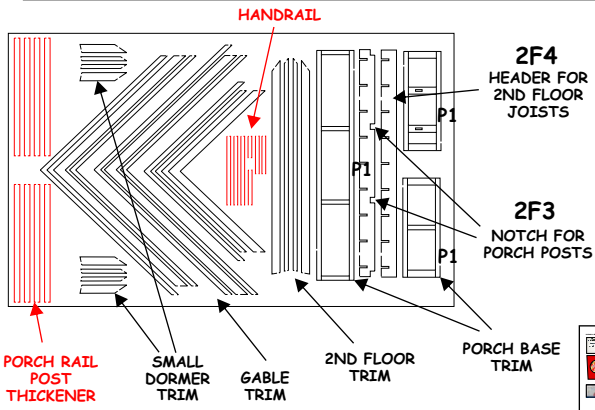




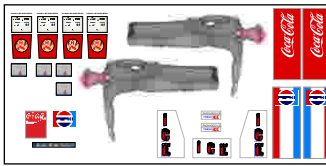
ROOFTOP DETAILS



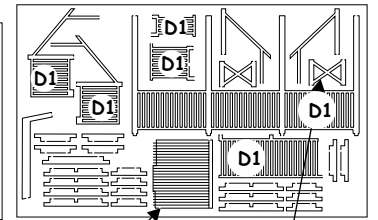
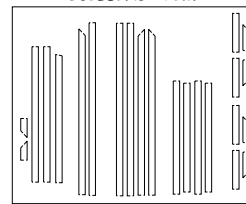
**SR6**  
2ND FLOOR SUB ROOF  
NOTE!  
SHOULD BE ATTACHED  
AFTER FINAL ROOF  
IS IN PLACE ON  
MAIN BUILDING



GRAPHICS AND DECALS

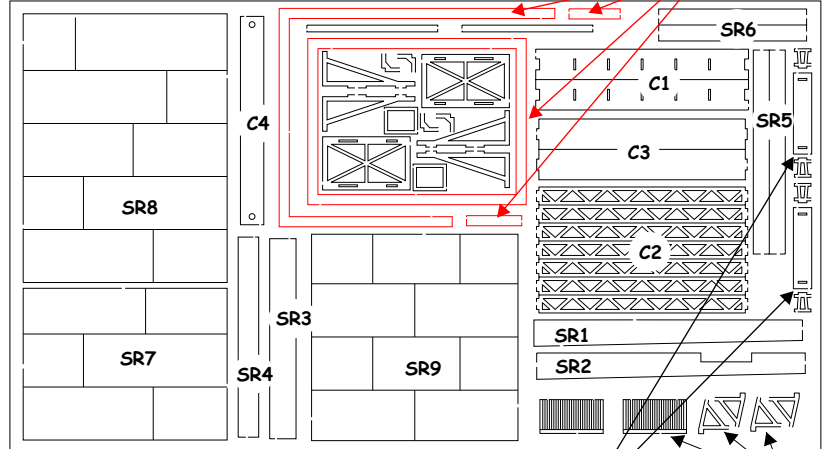
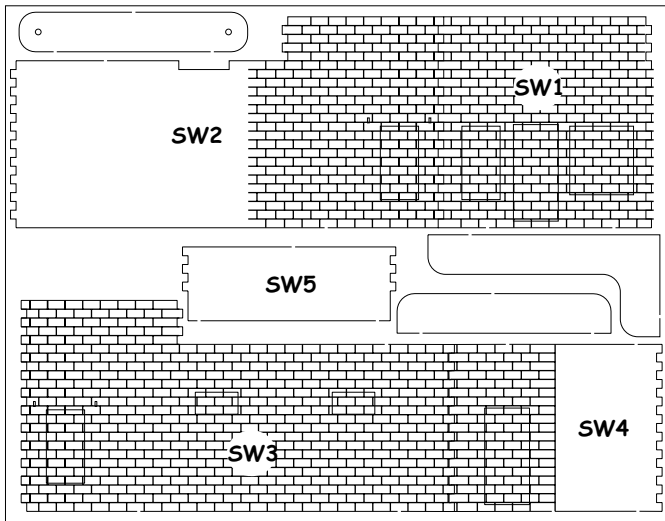


BUILDING TRIM



REAR PORCH ROOF

REAR PORCH BRACING

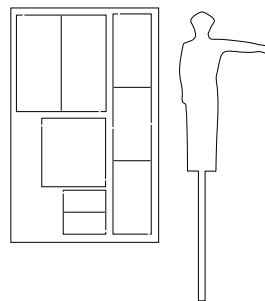
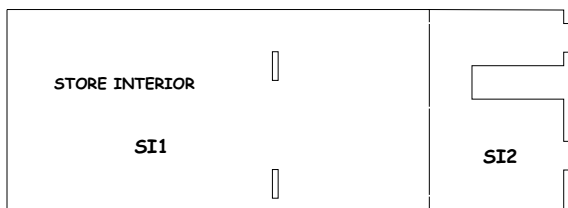


STORE WALL TOP COPING

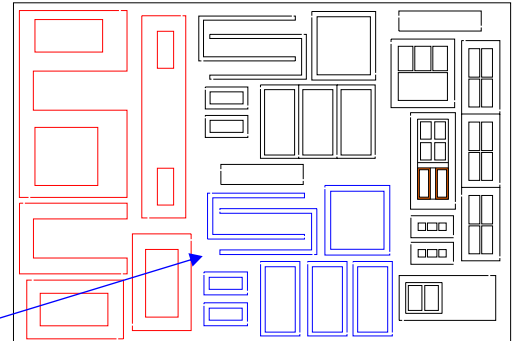
INTERIOR WINDOW BACKING

BENCHES

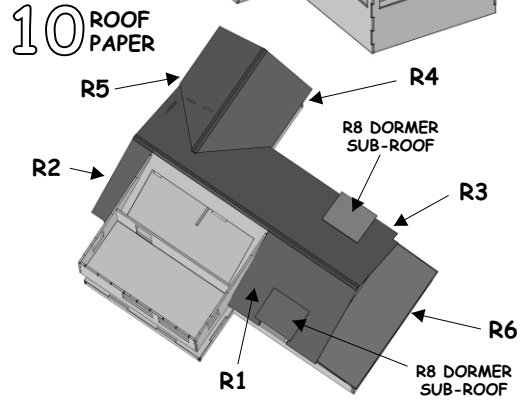
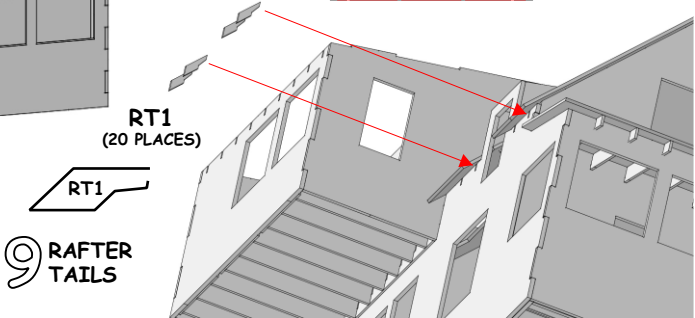
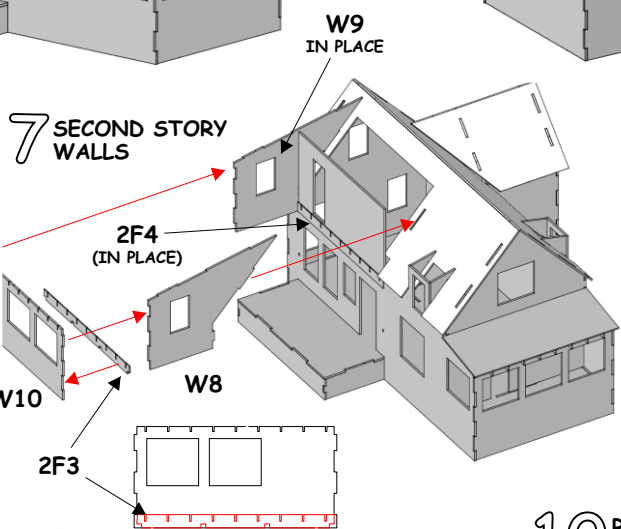
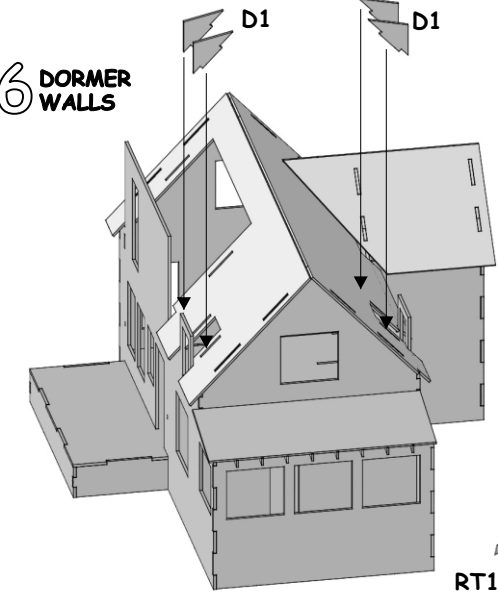
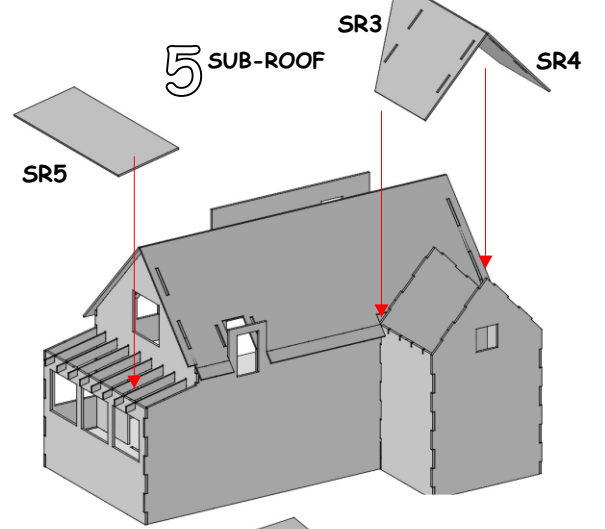
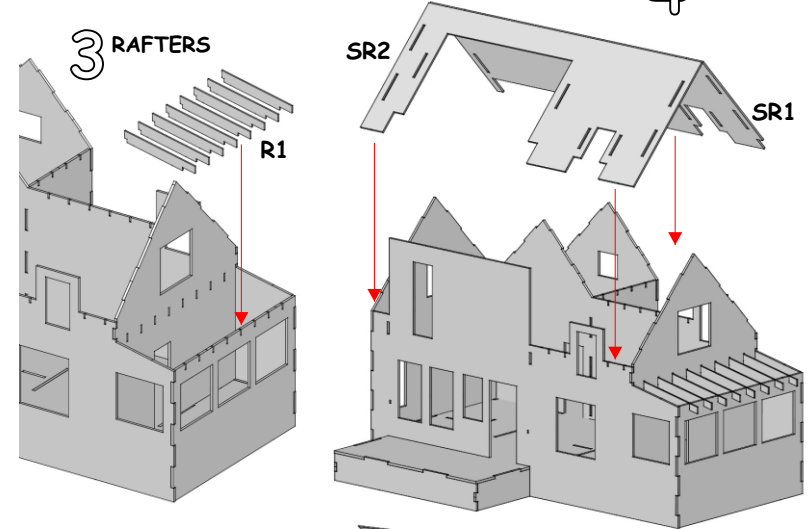
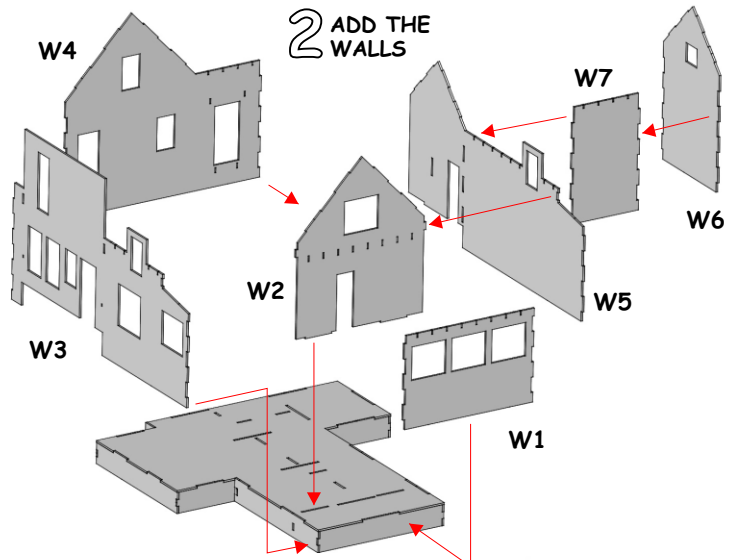
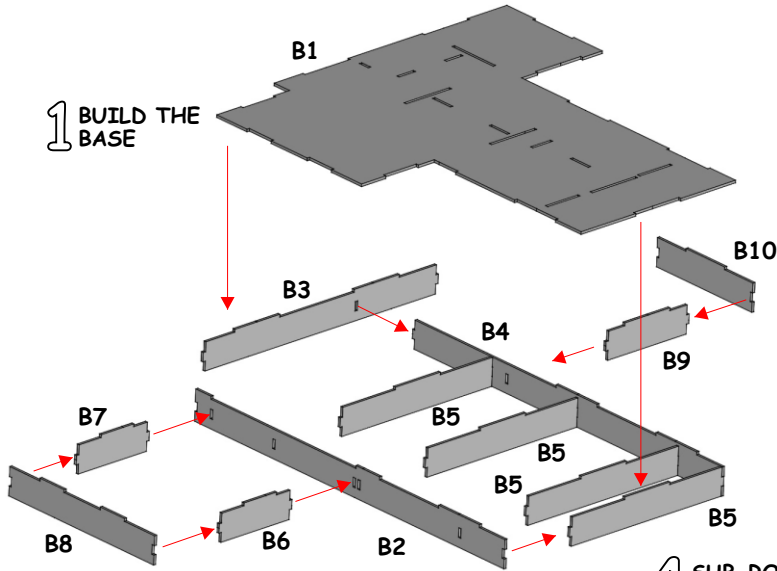
CANOPY



EXTERIOR FRAMES

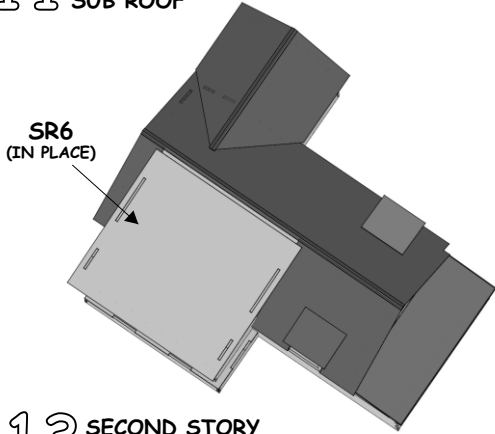




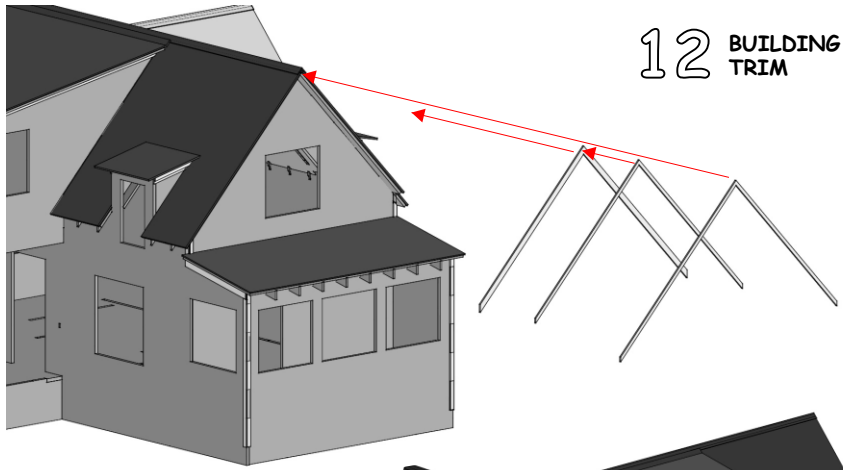




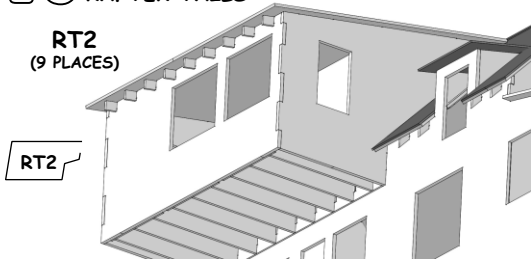
11 SECOND STORY SUB ROOF



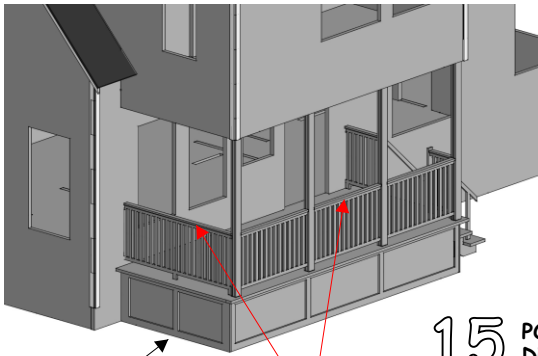
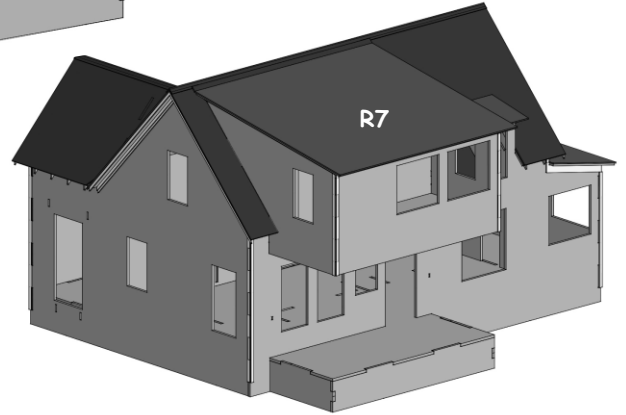
12 BUILDING TRIM



13 SECOND STORY RAFTER TAILS

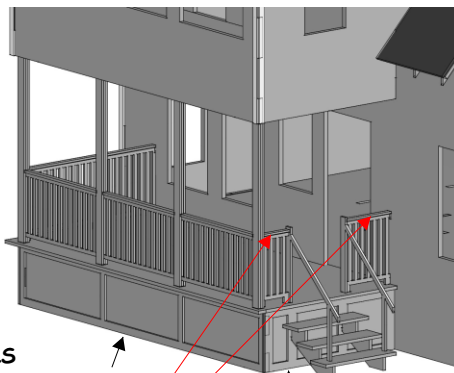


14 SECOND STORY ROOF

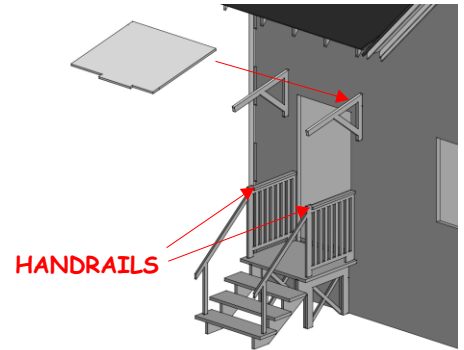


15 PORCH DETAILS

HANDRAILS

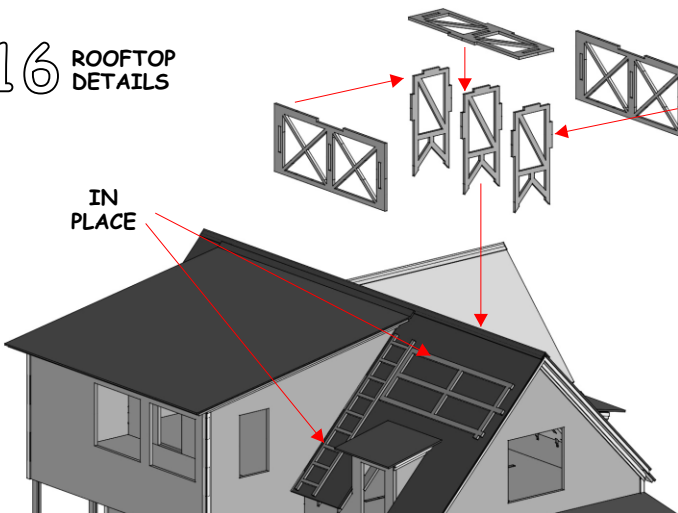


HANDRAILS



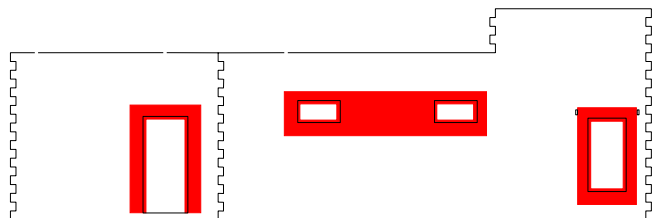
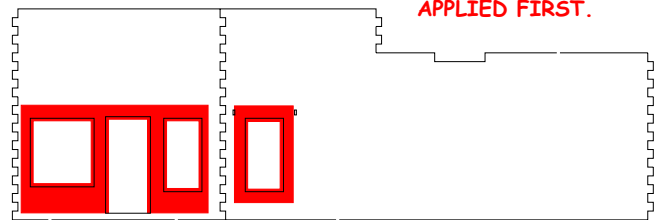
HANDRAILS

16 ROOFTOP DETAILS

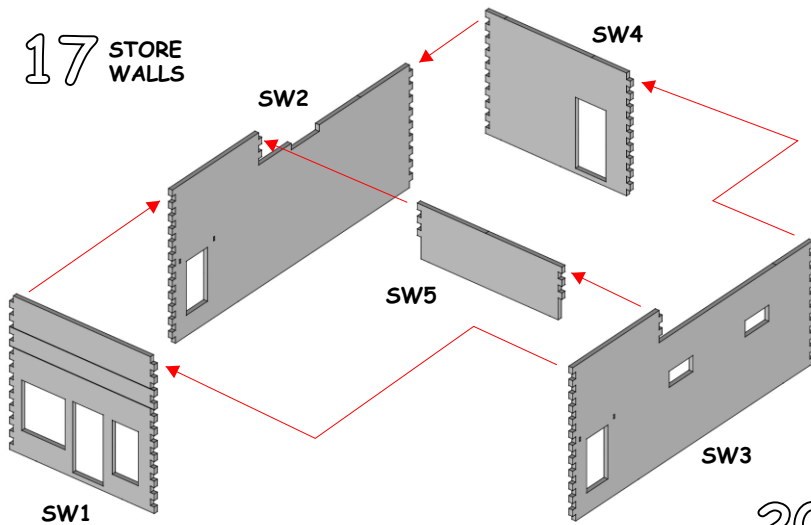


STORE WINDOW / DOOR BACKERS

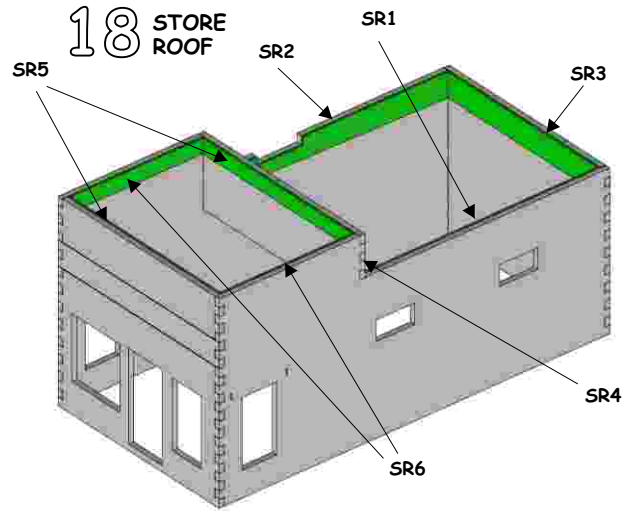
WINDOW AND DOOR BACKERS GO ON THE INSIDE OF THE WALLS AND SHOULD BE APPLIED FIRST.



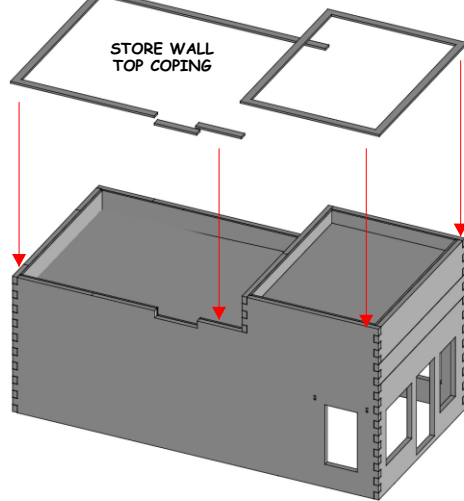
17 STORE WALLS



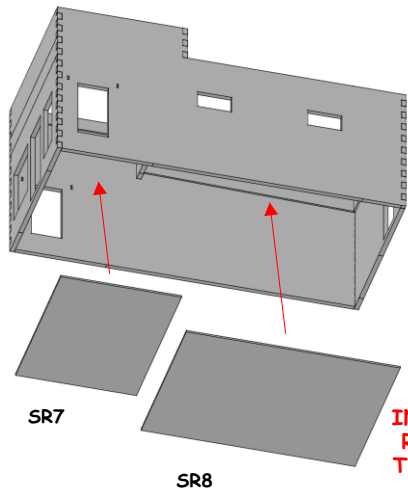
18 STORE ROOF



20 STORE ROOF COPING

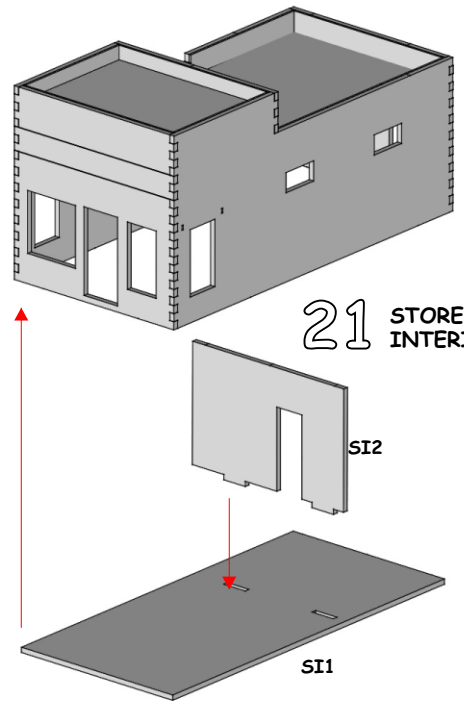


19 STORE ROOF

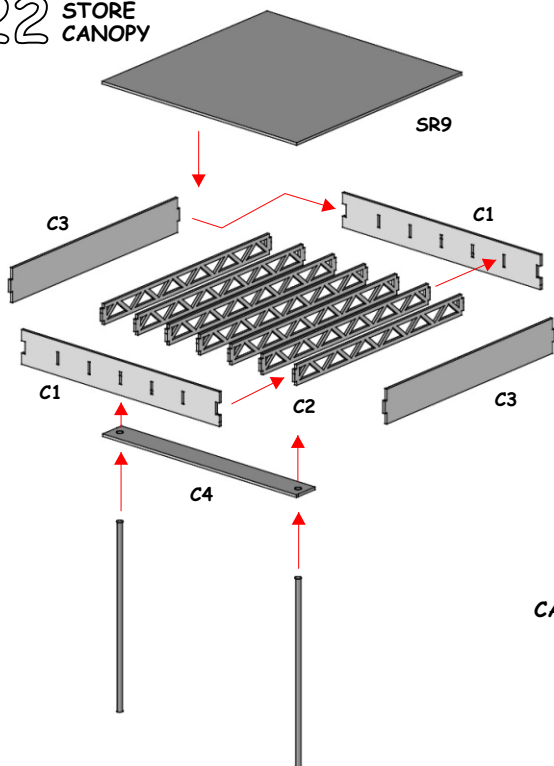


INSTALL THE ROOF FROM THE BOTTOM

21 STORE INTERIOR



22 STORE CANOPY



23 FINAL DETAILS

