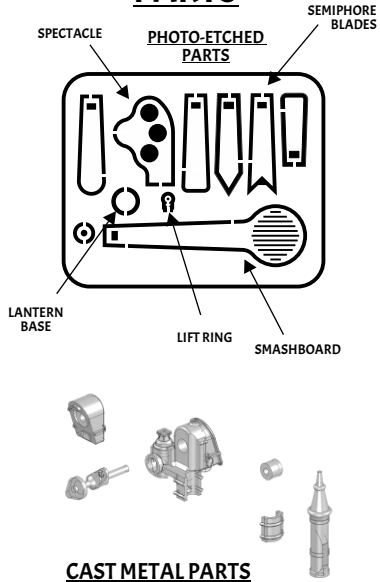


PARTS



IMPORTANT!
READ THROUGH ENTIRE ASSEMBLY
AND TEST FIT PARTS BEFORE
BEGINNING !

Tools You May Need:

- 1/32" Drill Bit
- 1/16" Drill Bit
- Needle Files
- Single Edge Razor Blade
- Dremel Tool
- CA Type Super Glue
- Kristal Klear**
- Red, Green and Yellow Transparent Paint

Clean and Debur all Parts

before beginning assembly. Some parts may need to be opened with a drill bit.

Mark the locations

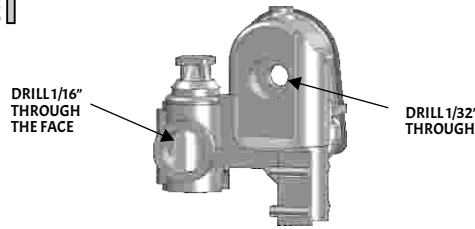
of the parts on the mast using the Diagram provided.

Transparent Paint Sample
in Three Colors.

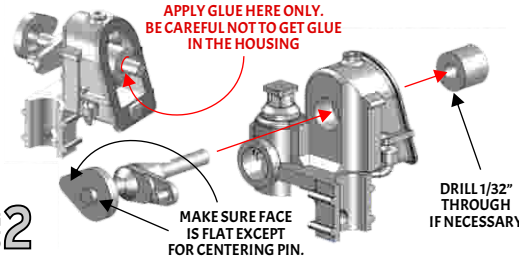


Item Number 0019

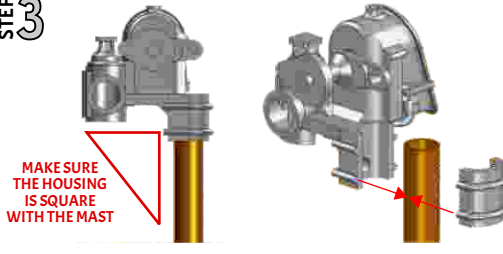
STEP 1



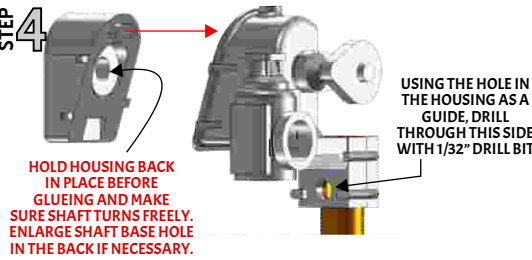
STEP 2



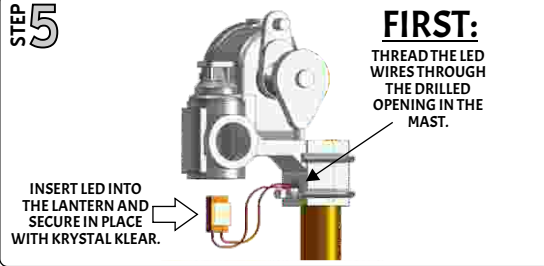
STEP 3



STEP 4

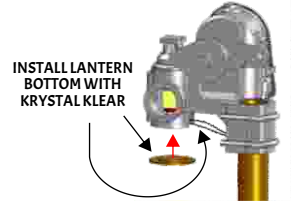


STEP 5

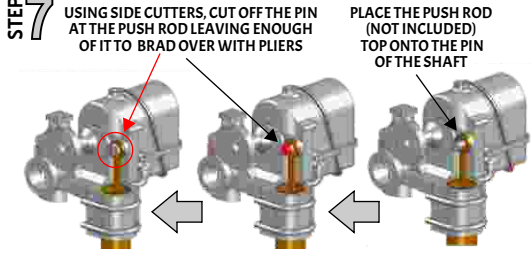


STEP 6

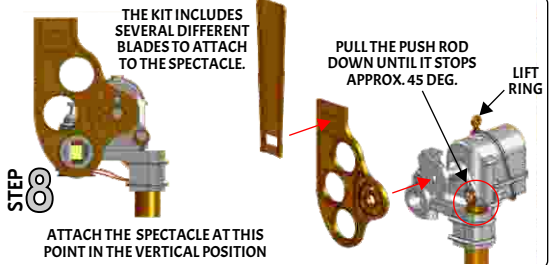
FILL ALL HOLES AND SEAMS WITH KRISTAL KLEAR
THEN, PAINT WITH BLACK PAINT TO PREVENT LIGHT LEAKS



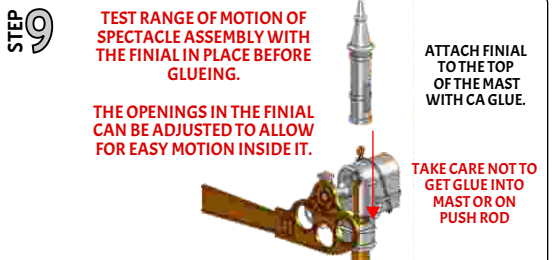
STEP 7



STEP 8



STEP 9



PAINTING

Prime and paint the spectacle and blade assembly then fill the roundel openings with micro Kristal Klear and (when thoroughly dry) use a transparent paint (like Vallejo) for the roundel color. The transparent paints can be easily mixed together to allow an unlimited variation to the roundel color.

We suggest priming the finished assembly with a laquer based primer (Tamiya). The LED will need to be masked before painting. One of the easiest ways to mask the LED is to put a small amount of modeler's clay in the lantern opening. Don't press the clay too far into the signal head or it may be difficult to remove once the paint is dry.