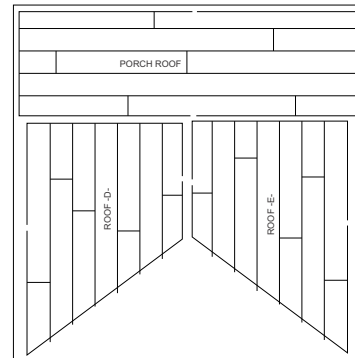
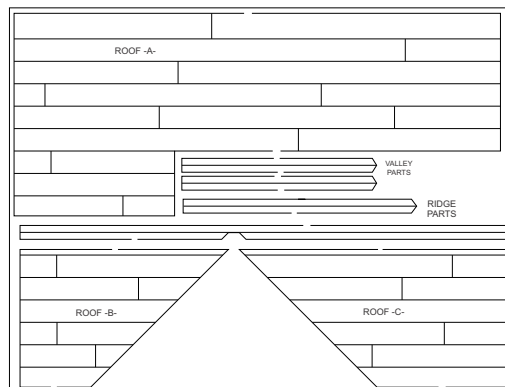
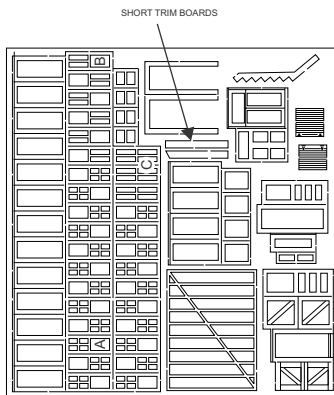
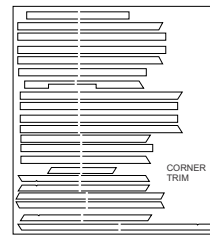
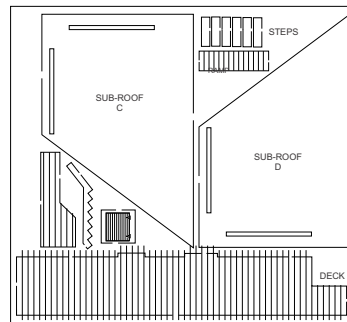
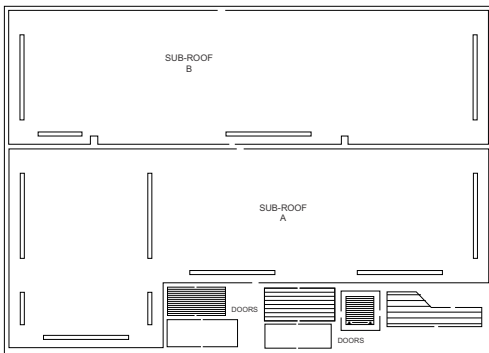
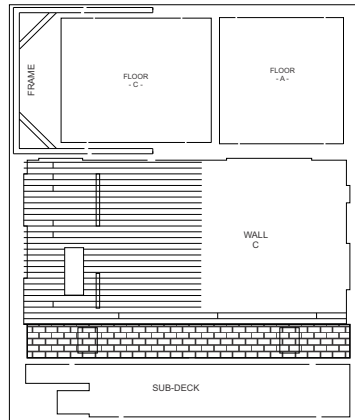
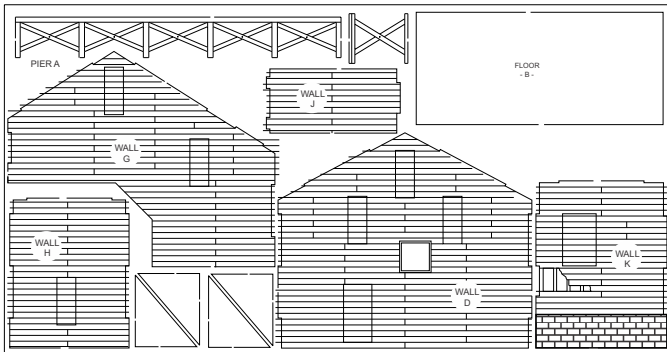
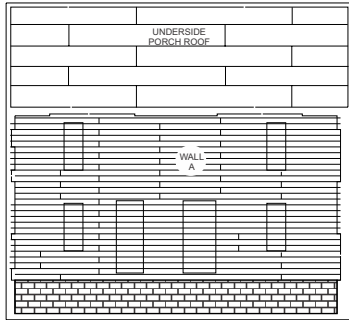
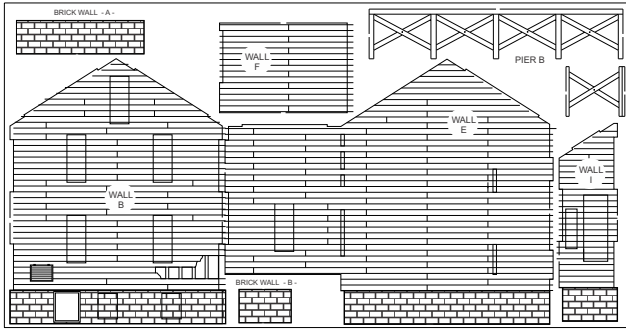
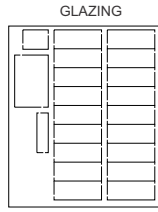
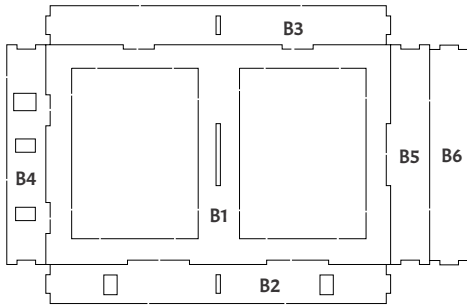
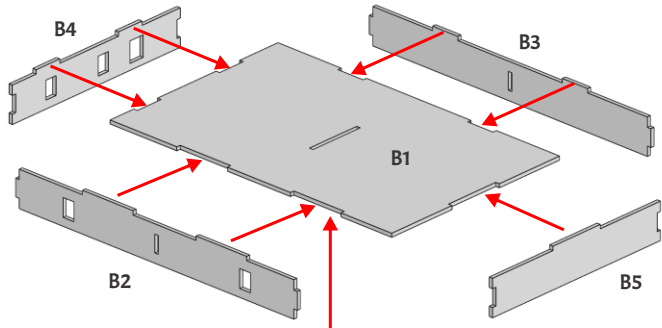



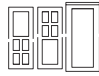
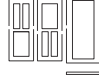





Bartlett Part List





New Update:
First floor/base
addition.

Build this first.

-  WINDOW-D- (1 PLACE)
-  WINDOW-A- (1 PLACES)
-  WINDOW-B- (3 PLACES)
-  WINDOW-C- (3 PLACES)
-  DOOR-Z-
-  DOOR-Y-
-  DOOR-X-
-  DOOR-W-

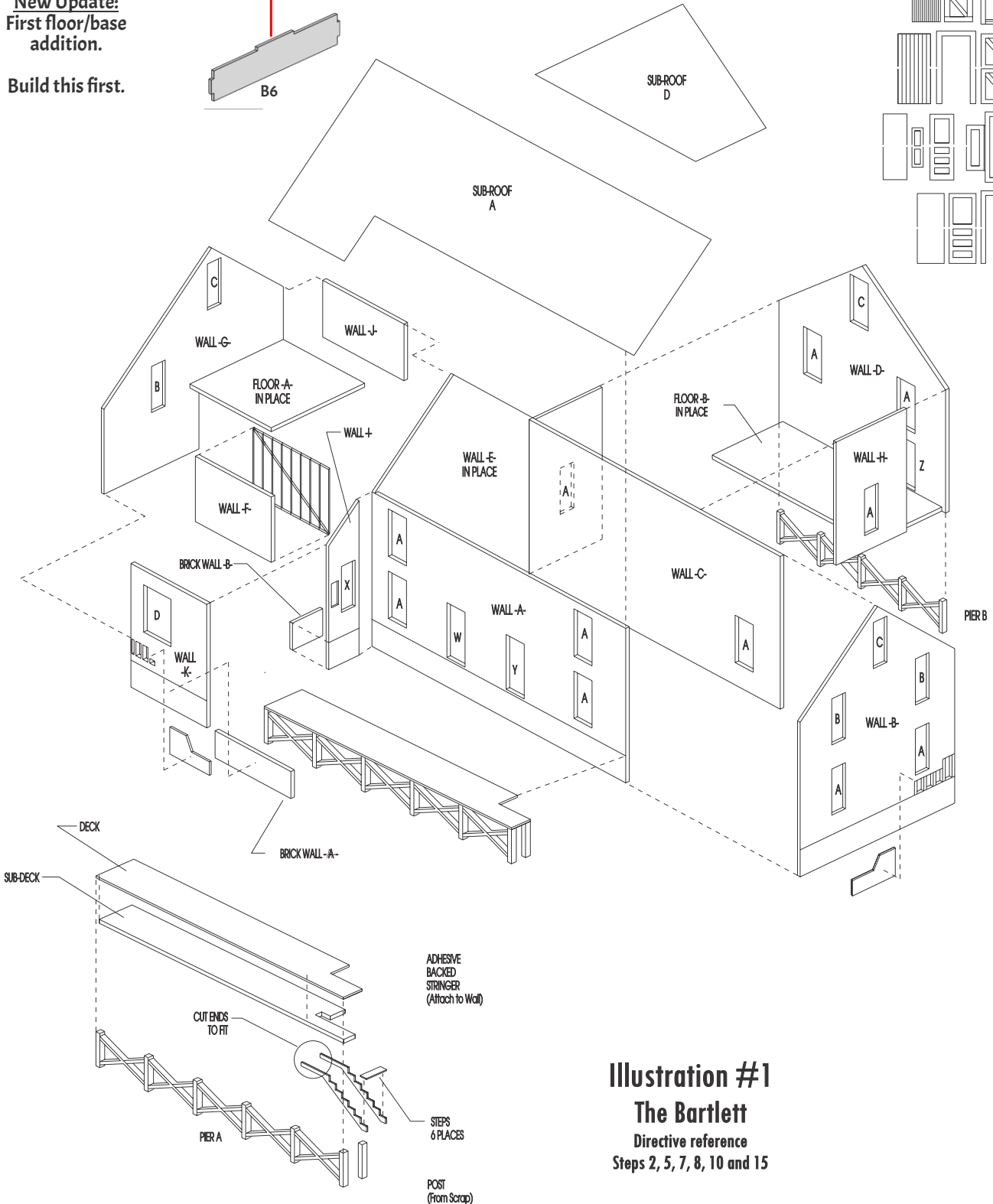


Illustration #1
The Bartlett
Directive reference
Steps 2, 5, 7, 8, 10 and 15

Illustration #2
The Bartlett
 Directive reference
 Steps 12

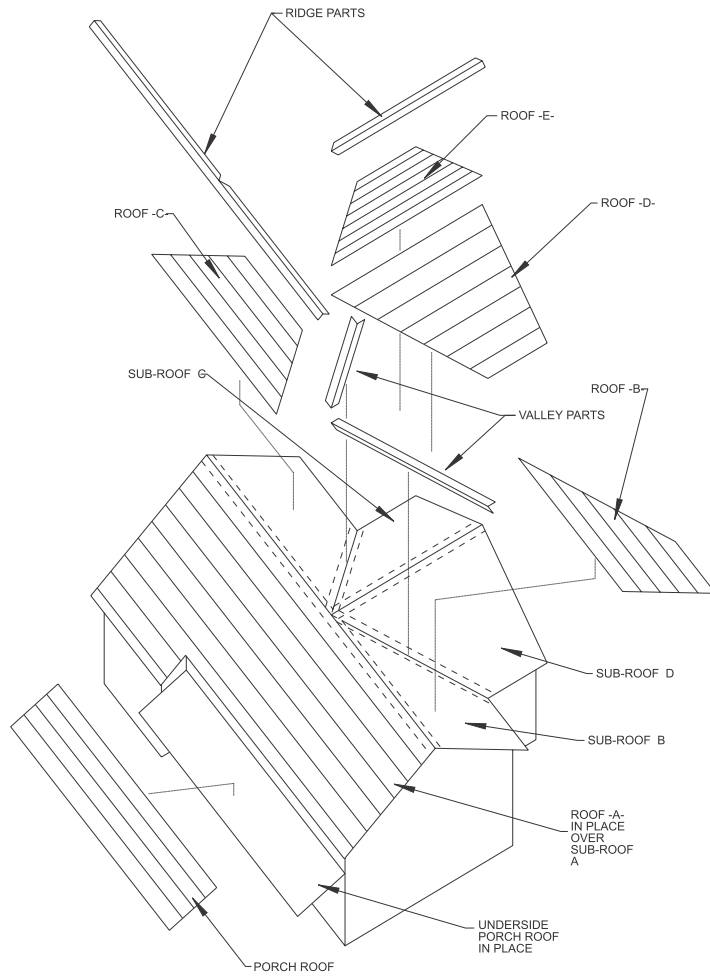
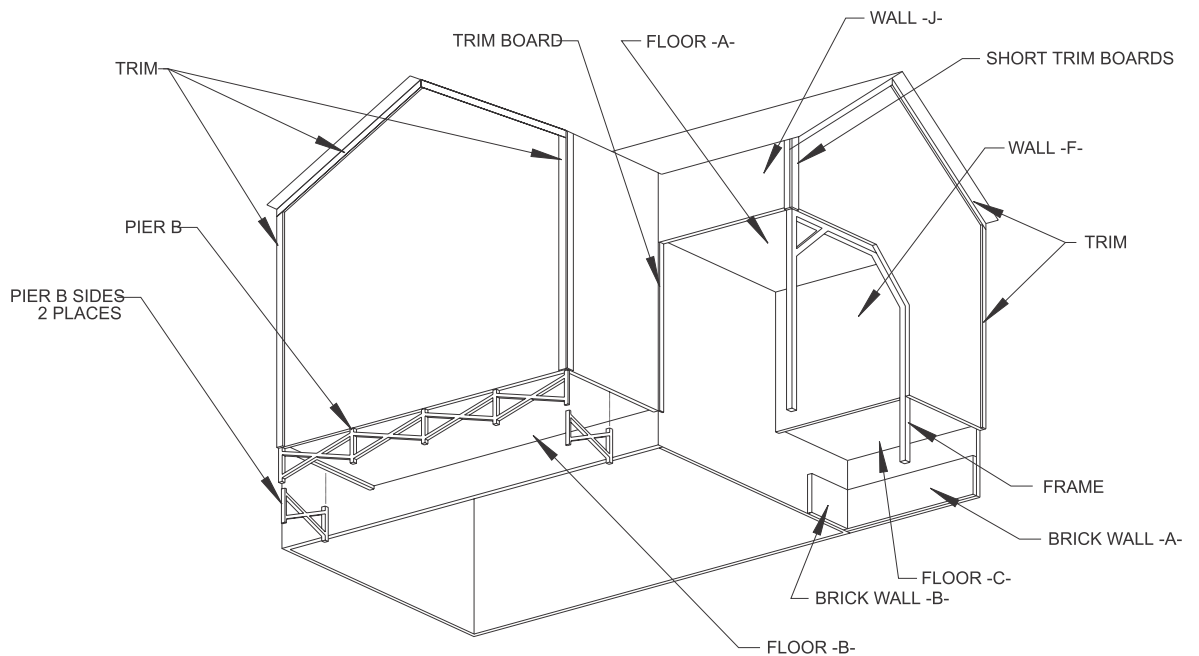


Illustration #3
The Bartlett
 Directive reference
 Steps 13.



The Bartlett #109

Thank you for choosing a Showcase Miniatures Laser Engraved kit. The following instructions were intended to guide you through the assembly sequence of this kit. We have cross referenced many of the steps in our instructions with exploded view illustrations. This will provide you with both visual and written directives.

- Step 1. Inspect all of the parts group panels. Remove any excess wood left inside the windows or doorways. Familiarize yourself with the parts. They are shown in the illustrations, lettered alphabetically according to their function I.E. Wall A Wall B Floor A Floor B etc. Choose the colors you want to paint your structure then paint the parts while they are still on the parts panel.
- Step 2. Perform a dry assembly of the walls and foundation parts to further familiarize yourself with the kit (Use the exploded view Illustration #1 to guide your assembly). You will notice that the walls are tabbed and grooved. You may also notice that the tabs are positioned differently from one part to the other. We have done this to help insure that the parts aren't easily mismatched. In other words this model will go together somewhat like a puzzle. This feature helps you align the walls respectively to their proper positions.
- Step 3. After determining the locations of the walls, Glue in place. I recommend a wood glue that sets in about 10-30 minutes. A longer set time offers more flexibility during the fitting process.
- Step 4. Before the glue sets on the walls install Floor A and Floor B (Refer to Illustration #1.) in their respective locations inside the walls.
- Step 5. Located on the sub roof parts panel in between part C and D are two scribed pieces of wood. Remove them and glue them behind the two walls that have part of the exterior siding torn off. *Located on the Walls and foundation parts panel, wall B and wall K.*
- Step 6. You may choose to paint or stain the walls again at this point.
- Step 7. Install sub roof panels A, B,C, and D (Exploded view illustration #2). All 4 sub roof panels have slots that interlock with tabs located on the top of the walls. Try to align all the tabs as close as possible. If the tabs don't line up you can trim or file them to improve their fit.
- Step 8. Assemble loading platform and steps (exploded view Illustration #1). Do not attach the loading platform until after the windows and trim have been installed.
- Step 9. Using Illustration #1 match and assemble the respective door and window parts *located on their own adhesive backed parts panel.* Window letter A and B are three part circulation windows. The top slider, bottom slider, and the outer frame. The rest of the windows are two piece. Like the circulation windows the doors are meant to be stacked in layers. They have a peel off adhesive back to keep the stack from moving. Adhere the stack (or layers) together. They are now ready for paint or stain if you choose.
- Step 10. Insert the finished windows into the respective window cut outs. Match the doors and windows to the openings alphabetically (I.E. window A to wall opening A etc. exploded view illustrations #1).
- Step 11. Bend and adhere the two valley pieces into the two corresponding roof valleys before you install the roofing paper (exploded view illustration #2).
- Step 12. Remove the roofing paper from the Roof parts panel. Peel off the adhesive and adhere the roof parts to the corresponding sub roof (exploded view illustration #2). Bend and adhere the ridge parts to the two roof peaks after you have installed the roofing paper.
- Step 13. Adhere the varying length trim and fascia boards *located on their own adhesive backed parts panel* to their corresponding locations (exploded view illustration #3).
- Step 14. Install the loading platform that you assembled earlier in step 7 (use exploded view illustration #1 to guide you in its placement)
- Step 15. Attach the porch sub roof and roof paper(exploded view Illustration #1).
- Step 16. Touch up the paint work if needed and weather your structure to your personal preference.
- Step 17. We have provided stick and peel signage that can be cut out and applied to your finished structure.

As with all of our kits I hope you have enjoyed assembling and finishing this model. This model is one of four in our first group of laser engraved models. It is very important to us that you are happy with our models. Please let us know of any suggestion or ideas you might have to improve our next kits.

Painting Suggestions by Raul Perez

Here's the CraftSmart colors and ratios that I used to paint the building:

Base Building Color:

Burnt Sienna	10x
Holiday Red	10x
Deep Gray	3x

Aging Colors for the Building (In order of application):

Deep Gray
Dark Gray
Gray
Holiday Red
Holiday Red 1x with Gray 1x
Orange Spice

Doors and Window Trim:

Vanilla

Brick Base Colors:

Mortar color – Dark Gray
Base brick color – Café au Lait
Highlight Brick Color – 3x Café au Late, 2x Deep Gray