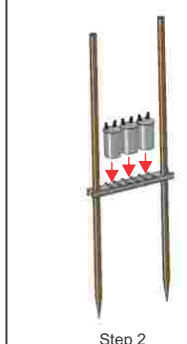
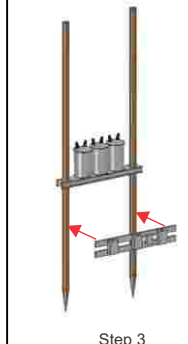


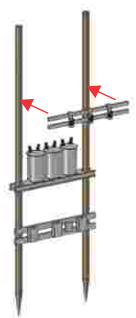
Step 1



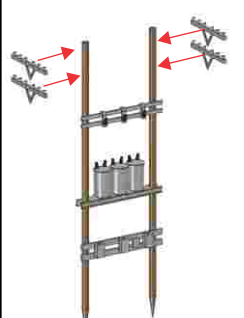
Step 2



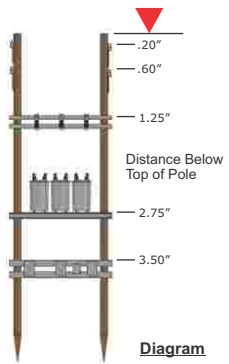
Step 3



Step 4



Step 5



Clean the metal parts with rubbing alcohol and let dry before assembling. When dry, spray paint the metal pieces with Tamiya gray primer. We recommend Tamiya gray primer because it is the proper shade of gray. We use super glue. You can dust on black pastel chalk for weathering at each attachment point of the parts when finished. This will give some depth and forced shadow to the finished model.