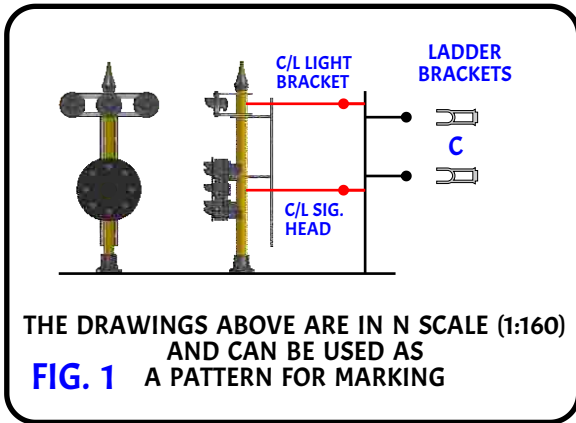
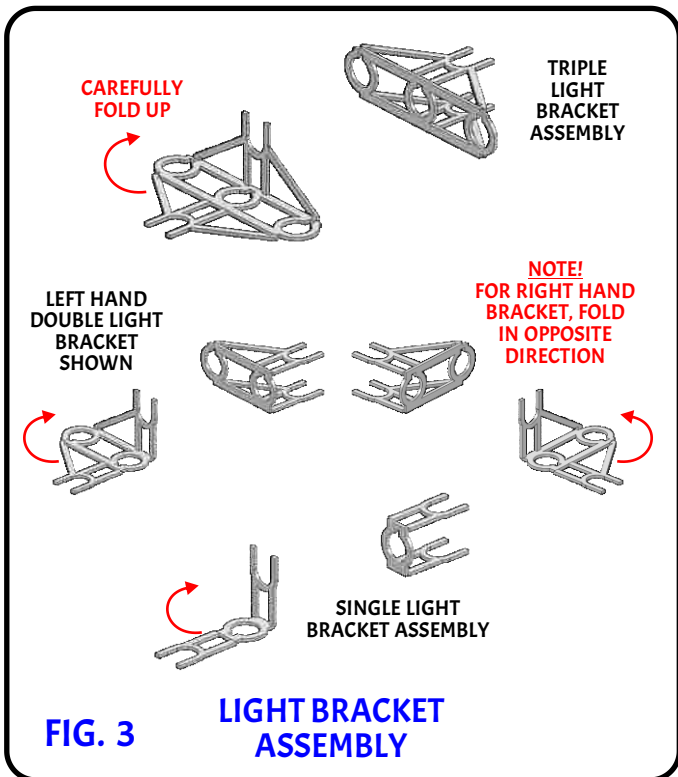
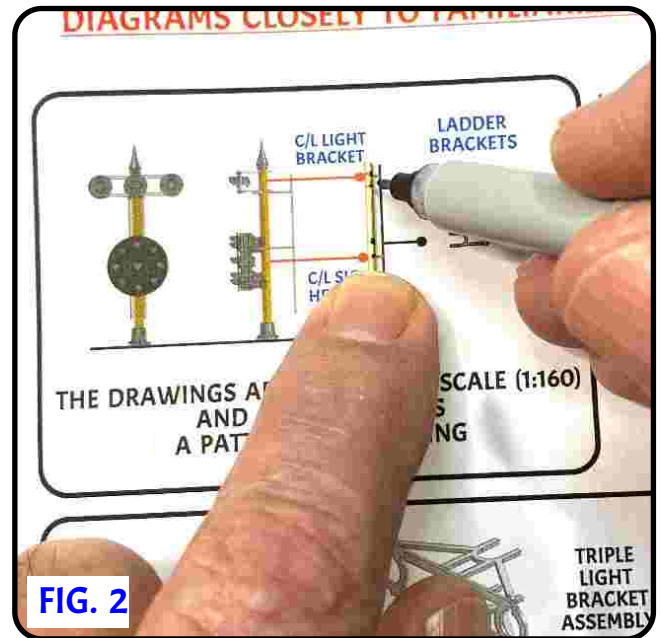


WE HIGHLY RECOMMEND THAT YOU READ THROUGH THE ASSEMBLY STEPS AND STUDY THE DIAGRAMS CLOSELY TO FAMILIARIZE YOURSELF WITH OUR SUGGESTED ASSEMBLY METHOD.



LAY THE BRASS MAST TUBE ASSY. DIRECTLY ON THE SUPPLIED DRAWINGS AND MARK THE LOCATIONS FOR THE LADDER BRACKETS, LIGHT BRACKET AND SIGNAL HEAD (FIG. 2).



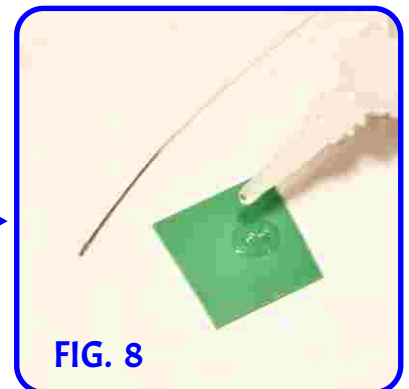
THE PHOTO-ETCH FRET CONTAINS THREE OPTIONS FOR THE LIGHT BRACKET. YOUR CHOICE OF A TRIPLE, DOUBLE OR SINGLE BRACKET. THE DOUBLE BRACKET CAN BE MADE LEFT HANDED OR RIGHT HANDED DEPENDING ON HOW YOU FOLD THE ETCHED PART (FIG. 3).

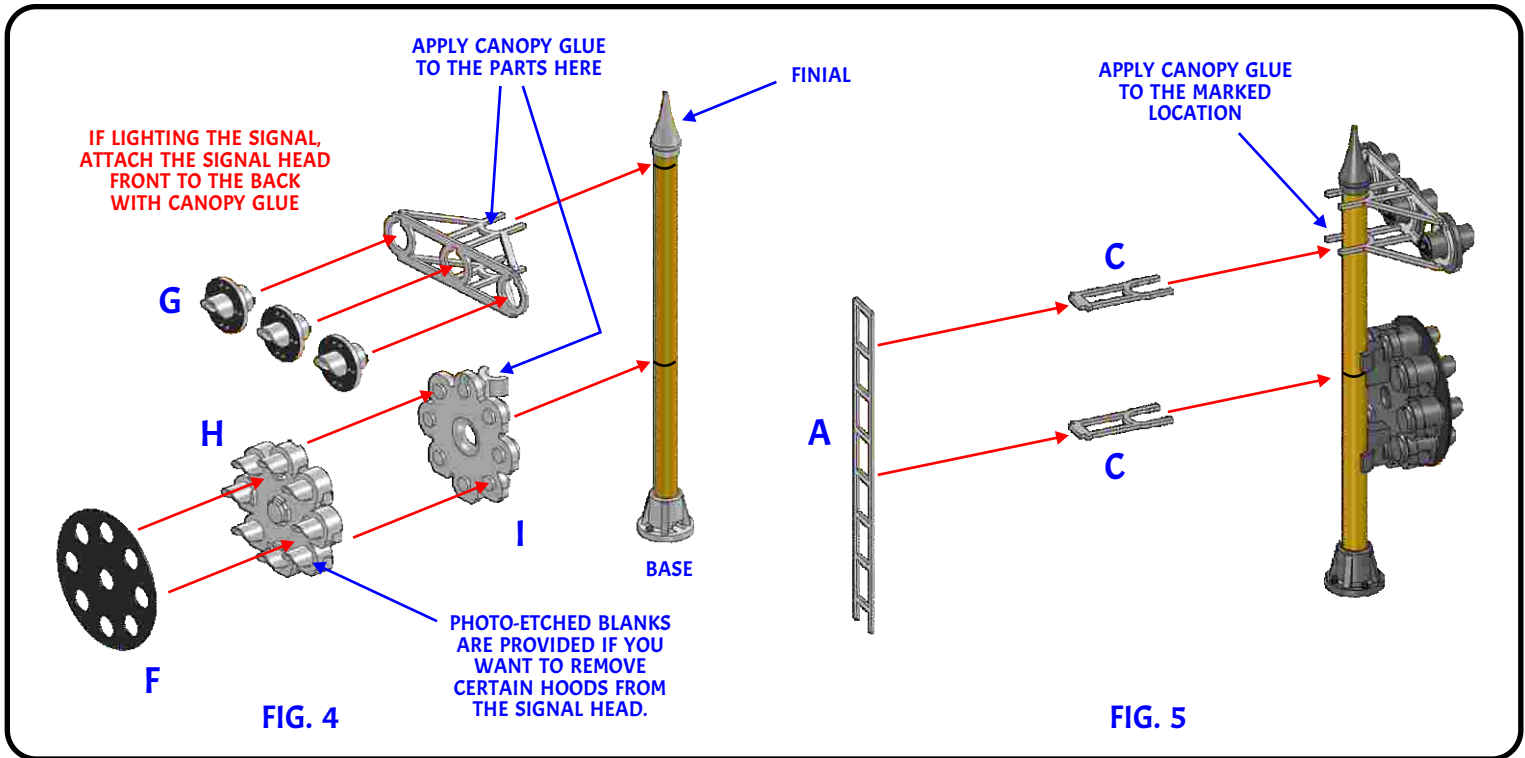
CAREFULLY FOLD THE BRACKET 90 DEG. AND APPLY A TINY DROP OF CA GLUE TO THE JOINT TO GIVE IT STRENGTH.

SEE "MICRO-GLUEING" BELOW

→ MICRO-GLUEING →

APPLY SEVERAL DROPS OF SUPER GLUE TO A PLASTIC SURFACE FOR A RESERVOIR AND USE A SHORT LENGTH OF FINE WIRE TO DIP OUT A TINY DROP OF GLUE (FIG. 8).





ATTACH YOUR CHOICE OF FINIALS TO THE TOP OF THE MAST TUBE AND THE BASE TO THE BOTTOM. GEL TYPE CA GLUE WORKS BEST FOR THE FINIAL AND THIN CA FOR THE BASE.

APPLY A SMALL DROP OF CANOPY GLUE TO THE "U" ON THE LIGHT BRACKET AND ALLOW TO DRY (FIG. 4). ONCE DRY, ATTACH THE LIGHT BRACKET TO THE TOP OF THE MAST AT THE PREVIOUSLY MARKED LOCATION ON THE MAST. A TINY DROP OF THIN CANOPY GLUE CAN NOW BE APPLIED TO SECURE THE BRACKET IN PLACE. INSTALL THE LIGHT HEADS TO THE LIGHT BRACKET WITH CA GLUE. IF LIGHTING THE SIGNAL, ACCESS TO THE LIGHT HEADS IS FROM THE BOTTOM AFTER ASSEMBLY.

APPLY CANOPY GLUE TO THE MOUNTING POINT OF THE SIGNAL HEAD BACK (I) AND ALLOW TO DRY. ONCE DRY, ATTACH THE SIGNAL HEAD BACK TO THE MAST AT THE PREVIOUSLY MARKED LOCATION. TOUCH A TINY DROP OF THIN CA GLUE TO THE HEAD/MAST JOINT AND ALLOW IT TO FLOW INTO THE JOINT. AN ACCELERENT CAN BE USED TO SPEED THE CURING PROCESS. ATTACH THE SIGNAL HEAD FRONT (H) TO THE BACK WITH CANOPY GLUE IF THE SIGNAL IS TO BE LIGHTED, CA GLUE IF OTHERWISE. THE SHIELD CAN BE ATTACHED WITH CA OR CANOPY GLUE.

APPLY CANOPY GLUE TO THE MARKED LOCATIONS ON THE MAST FOR THE LADDER BRACKETS AND ALLOW TO DRY (FIG. 5). APPLY THE LADDER BRACKETS TO THE MAST AND THEN THE LADDER TO THE BRACKETS USING CA GLUE ONCE THE LADDER AND BRACKETS ARE PARALLEL AND PERPENDICULAR TO THE MAST.



THIS KIT CAN BE COMBINED WITH OUR B&O SIGNAL TOWER (KIT SCM 616) TO CREATE THE PICTURED ASSEMBLY AND LIGHTED USING OUR 402 LEDs (SOLD SEPARATELY).