

Strong, Smooth, Quiet – Rolled Into One Great Door

TRAC-RITE®

944

ROLL-UP DOOR



Performance Counts.

That's why Trac-Rite Door's Model 944 is ideal for residential, self-storage, and several light-duty uses. It's the popular choice for backyard sheds, boat houses, counter shutters, park shelters, apartment/condo storage areas, school equipment sheds, interior partition dividers, and dozens of other access applications.

The 944 earns high marks for strength. Its undergone rigorous wind testing and the solid 26-gauge, rigid-rib steel curtain is durable, attractive, and requires little maintenance. The door comes with a full 3-year materials warranty. The 944 also scores high for its quiet, smooth operation and its ease of installation. It fits almost any opening because door sizes range from 3"W x 3"H to 11"W x 10'4"H in 1" increments. With eleven prefinished colors, you are sure to find a door to suit your needs.

Strong. Smooth. Quiet. Versatile. The 944 Door earns the highest scores in every area.



Colors vary from actual panel material. Please request a steel color sample for precise shade.

Tr Trac-Rite®
Door, Inc.

944

944WL

955

955WL

988

988WL

Features.

- Strong, Durable Materials
- Smooth, Quiet Operation
- Easy Installation
- Custom Sizes
- Multiple Applications
- Low Maintenance
- Minimal Back Room Requirements
- Rust Resistant
- 30/25-Year Paint and 3-Year Material Warranties



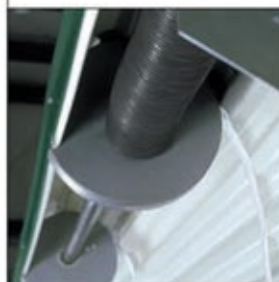
Optional zinc-coated, preassembled Tensioner allows for easy adjustment of the door spring after installation and as the spring relaxes from time and usage.



The SpaceGuard latch's cast zinc alloy assembly is rust resistant, and the slide bar features magnetic properties for use with security system switches. Offers overlocking capability and accommodates Trac-Rite's optional SpaceGuard cylinder lock.



12-gauge, zinc-coated door stops are mounted to brackets for increased strength and ease of installation. 18-gauge, zinc-coated steel guides with polypropylene runners allow doors to glide easily.



Helical torsion springs and spiral drums allow the door to operate and coil with ease. Felt tape located at each drum provides smooth, quiet operation.



Aluminum bottom assembly, stainless steel bolts, and rubber bottom seal are corrosion resistant. Powder coated, zinc-plated exterior handle and molded plastic pull rope handle provide convenient opening and closing of the door.

TRAC-RITE®

944

ROLL-UP DOOR



Mounting Surface & Door Clearance Requirements.

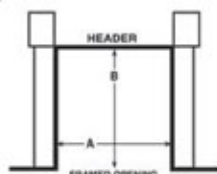
Measure the following areas to design a 944 door to your specific needs.

Framed Opening.

Measure the framed opening.

A = Width

B = Height



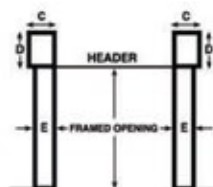
The 944 Door is available in custom sizes from 3'W x 3'H to 11'W x 10'4"H in 1" increments.

FOR EXAMPLE: If your framed opening is 7'6" wide and 8'0" high, you would order a 7'6" x 8'0" (width first, height second) door.

Mounting Surfaces.

Measure the mounting surface areas.

NOTE: All mounting surfaces must be flush.



Minimum Mounting Surface Areas

Your Measurement

Brackets

C = Width

4"

D = Height

7-1/2"

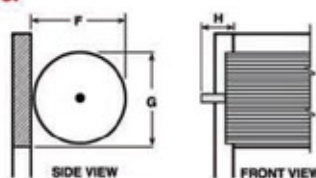
Guides

E = Width 2" (4" masonry jamba)

Door Clearance.

Measure the door clearance.

NOTE: Insulated doors require an additional 1" of back room and head room.



Minimum Clearance

Your Measurement

F = Back Room

18"

G = Head Room

15"

(16" for doors 7'1" and higher)

H = Side Room

4"

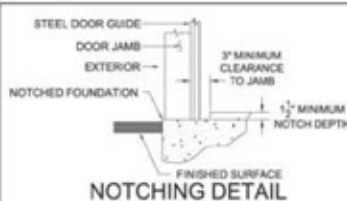
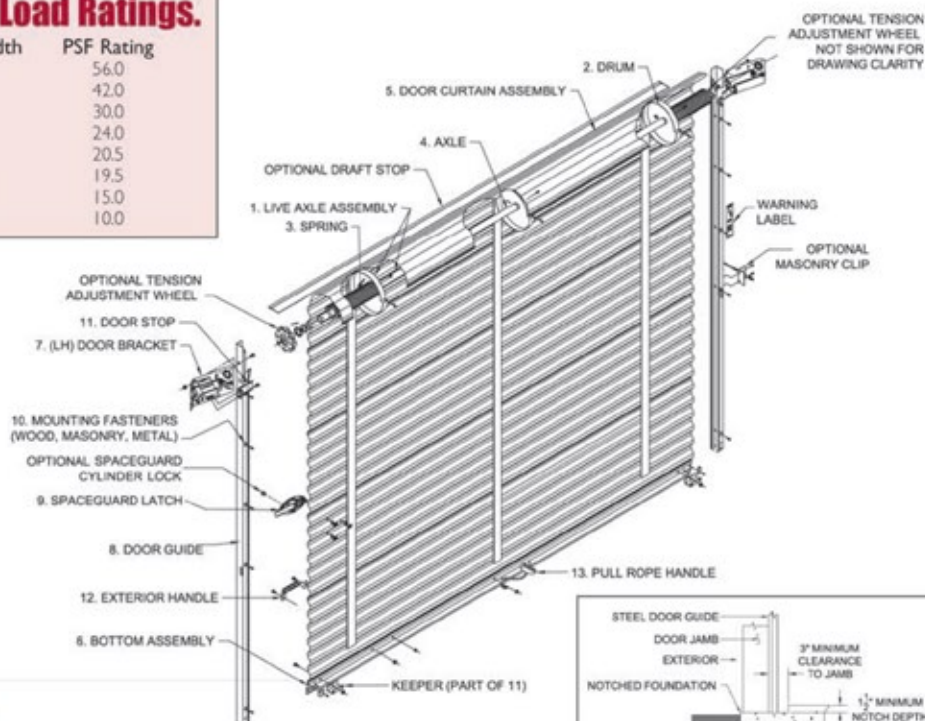
(9" for a chain hoist)

Accessories.

- Jamb Brush Seal
- Header Draft Stop
- SpaceGuard Cylinder Lock
- Hood (available in Iced White only)
- Insulation
- Interior Lock
- Operators
 - Direct-Drive Chain Hoist
 - 4:1 Reduced-Drive Chain Hoist
 - Medium-Duty Motor Operator
 - Space-Saving Motor Operator
 - Shaft Extension
- Tensioner

Wind Load Ratings.

Door Width	PSF Rating
5'0"	56.0
6'0"	42.0
7'0"	30.0
8'0"	24.0
8'8"	20.5
9'0"	19.5
10'0"	15.0
11'0"	10.0



Floor offset recommended to prevent water migration.

Specifications.

DESIGN TYPE Live axle: door axle rotates in bracket bearing during operation.

DRUMS Stamped, continuously welded at the hub. 9-5/8" diameter spiral x 1-1/4" wide. 18-gauge, zinc-coated steel. Two drums with doors up to 5' wide, three drums with doors over 5' wide. Prevents panels from bowing.

SPRINGS Helical torsion. One spring for doors 5' wide and smaller, two springs for doors wider than 5'.

AXLE 1-5/16" outside diameter, high-yield structural steel tubing.

CURTAIN Roll-formed sections, factory-seamed from 26-gauge, Grade 80 galvanized steel. Siliconized polyester finish in eleven standard colors. Full-length 2" felt tape located at each drum.

BOTTOM ASSEMBLY Zinc-coated steel bottom angle mounted to corrosion-resistant aluminum extrusion with stainless steel bolts. TPE blade astragal also included.

BRACKETS 12-gauge, cold-formed, zinc-coated steel. Grease-packed ball bearings are factory installed in the bracket.

GUIDES 18-gauge, zinc-coated, 1-1/2" deep. Featuring polypropylene guide runners to assure smooth operation and prevent steel-on-steel contact.

EXTERIOR SPACEGUARD LATCH

Cast zinc alloy with black nickel finish. Latch slide has magnetic properties for use with security system switches. Designed to accommodate two padlocks up to 7/16" shank. Accommodates Trac-Rite's optional SpaceGuard cylinder lock, which features an easy over-lock system. The cylinder lock does not penetrate the door.

MOUNTING FASTENERS Steel or wood fasteners included. For masonry openings, mounting clips and anchoring system are sold separately.

DOOR STOP 12-gauge, zinc-coated stops mount to brackets for increased strength and ease of installation.

EXTERIOR HANDLE Powder coated, zinc-plated outside handle.

PULL ROPE HANDLE Molded plastic rope handle with long-lasting rope.



Note: Product specifications are subject to change without notice.