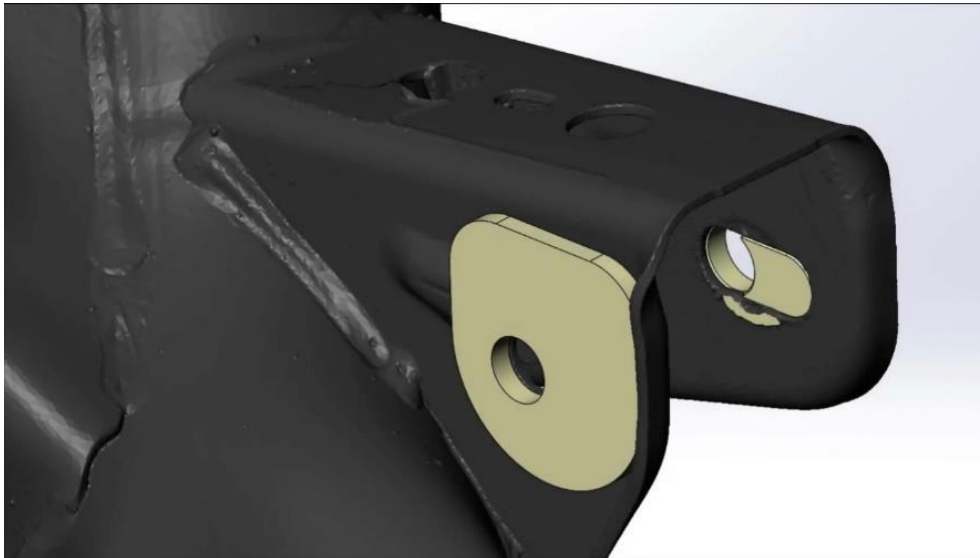


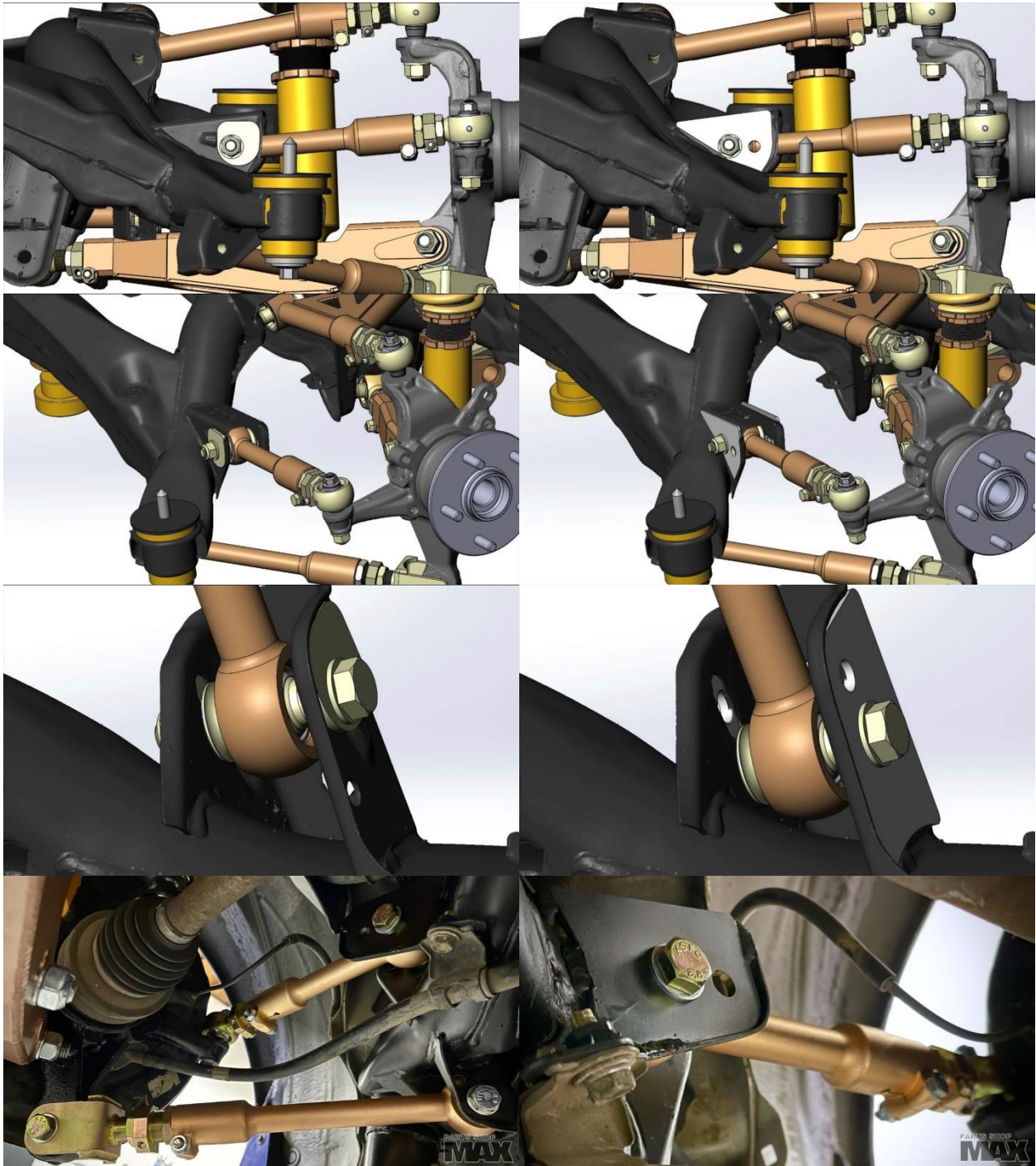
XE10 IS300 / JZS16X GS Rear Toe Slot Lock Out Plates

Description & install tips

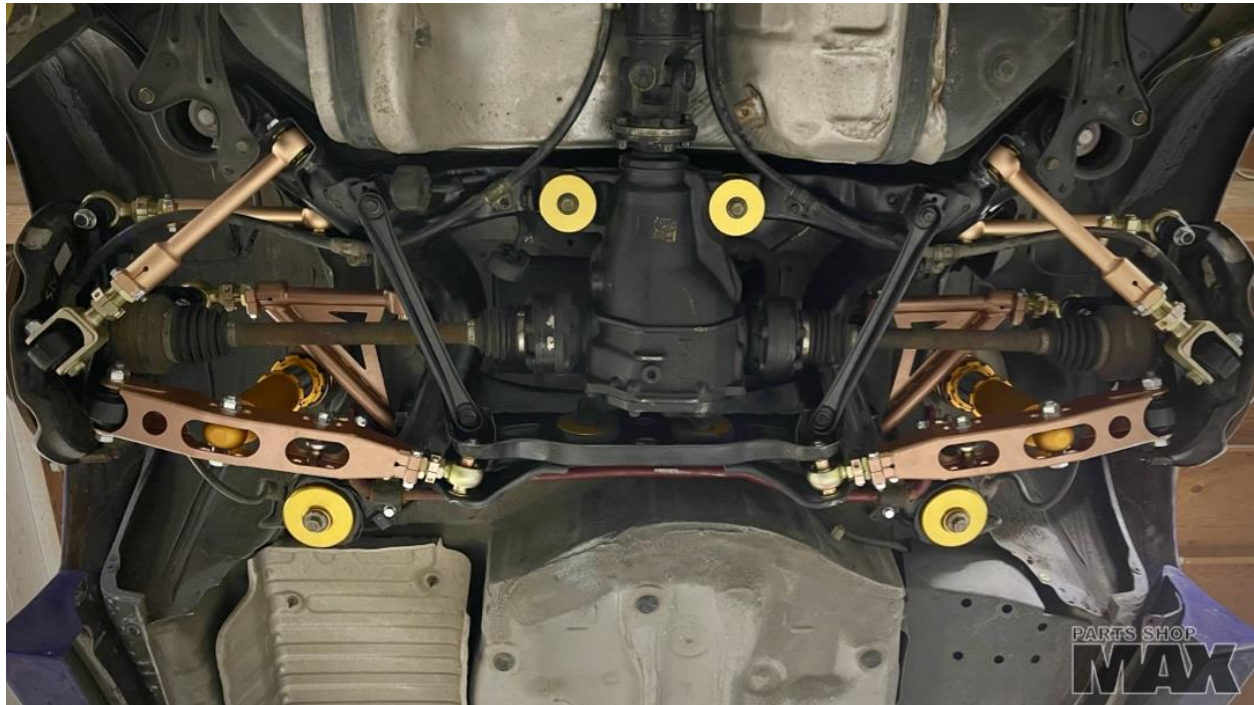
CNC machined, gold zinc plated steel, M12 eccentric bolt lockouts for use with adjustable toe rods. These plates precisely locate inside the eccentric slot as well as the outside profile so your alignment never moves. The hole position is biased towards the car centerline, allowing a longer toe rod length to help reduce the massive toe change throughout suspension travel. Mounting hardware is included that is appropriate for the thickness of these plates. **The stock oval holes are often distorted and may require some filing for these plates to snap into the hole properly. Fits 98-05 Lexus IS300 and Toyota Altezza. 97-04 Lexus GS and Aristo JZS16X.



Install Example, compared to the weld on zero toe change plates.



Install Example



Alignment change through suspension travel when combining parts sold separately.

Lexus SXE10 is300 rear suspension			maximum alignment change	
Long toe rod with weld on plate OEM SF height			.12"	3.05mm
Ride Height	0	Toe		
Full Bump	0.06" per side	Toe in		
Full Droop	0.02" per side	Toe In		
Long toe rod with weld on plate & SF risers			.036"	0.91mm
Ride Height	0	Toe		
Full Bump	0.011" per side	Toe in		
Full Droop	0.018" per side	Toe In		
Short toe rod with bolt on lockout OEM SF height			.48"	12.19mm
Ride Height	0	Toe		
Full Bump	0.23" per side	Toe in		
Full Droop	0.01" per side	Toe out		
Short toe rod with bolt on lockout & SF risers			.31"	7.87mm
Ride Height	0	Toe		
Full Bump	0.155" per side	Toe in		
Full Droop	0.004" per side	Toe in		
Stock car lowered			1.2"	30.48mm
Ride Height	0	Toe		
Full Bump	0.582" per side	Toe in		
Full Droop	0.024" per side	Toe out		

ONE-YEAR LIMITED WARRANTY AND DISCLAIMER

All Parts Shop Max brand products are intended for Off Road Use Only and carry a one year limited warranty. See below for details.

All other branded products carry their respective manufacturer warranty.

Parts Shop Max products are warranted to be free of defects in material and workmanship for one (1) year from the date of purchase. If a product fails to meet specifications, Parts Shop Max USA Inc. or P.S.Max Precision Industries LLC. (in short, Parts Shop Max) will, at its election, repair, replace, or make an appropriate adjustment, if Parts Shop Max determines to its satisfaction that the product is defective in material or workmanship, i.e. contains a defect arising out of the manufacture of the product and not a defect caused by other circumstances, including, but not limited to accident, misuse, abuse, unforeseeable use, neglect, alteration, improper installation, improper adjustment, improper repair, or failure caused by other equipment or interaction with other equipment.

Parts Shop Max is not responsible for labor charges, removal charges, installation, or other incidental or consequential costs. In no event shall the liability of Parts Shop Max exceed the purchase price of the product. Parts Shop Max makes no other warranties, either expressed or implied, including limitation warranties as to merchantability or fitness for a particular purpose.

Parts Shop Max shall not be liable for, and buyer assumes all risk of, any advice or failure to provide advice by Parts Shop Max to buyer regarding the product or use and installation of product. Parts Shop Max shall not be liable for any special, incidental or consequential damages.

If the purchaser of the product has failed to regularly inspect and maintain that product before and after use, or places that product under any circumstance leading eventually to, or immediately to failure, and or neglected to seek professional installation and setup through a professional technician experienced with that same Parts Shop MAX product, all warranties and remedies granted may be terminated.

Parts Shop Max USA Inc. 220 Engel Street Escondido CA 92029

Call or Text 858-566-6969 Monday to Friday 10:30am to 5:30pm or

Email maxusa@partsshopmax.com DM @partsshopmax on Instagram