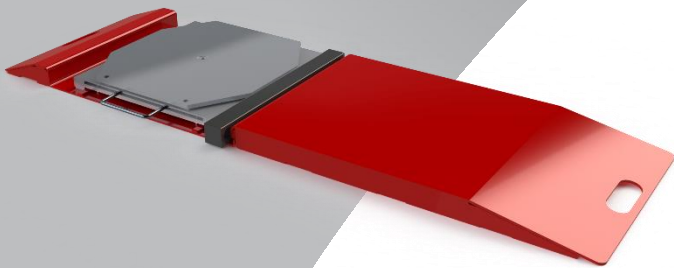


## Portable Alignment Kit

### CAS-1



#### Features

- 4 complete sections with each measuring 14.75"W x 52.79"L x 1.635"H
- 26.59" roll back distance
- 13.75" roll forward distance
- Includes roll back bridges
- Easily assembles with interlocking sections
- Keep it portable or bolt it in place
- Turnplates included
- Custom sizes available
- Powder coat black (shown in red to highlight details)
- **Convenient storage cart option Model CAS-C1**

Model CAS-1 is a portable alignment kit designed for roll back and forward compensation. Converts any drive-on service or collision frame rack into an alignment bay. Provides the flexibility to do alignments in any stall.

