



11515 Adie Rd. Maryland Heights MO 63042

Phone (888) 473-5378  
Local Phone (314) 699-9613  
Fax: (314) 699-9617  
Website: <http://qsponline.com>

## LM-200 Warranty

The LM-200 has been thoroughly tested and is guaranteed for a period of 12 months from the date of delivery. Under the terms of this guarantee all components which are proven defective within the warranty period will be repaired or replaced free of charge. Our technical assistance service is the sole authority in determining whether or not defects come under the coverage of the guarantee. The guarantee excludes all responsibility on the part of the Quality Stainless Products for direct or indirect loss or damage to persons or things deriving from incorrect operation or servicing of the product. The guarantee is limited to defects in materials, workmanship and assembly, and excludes all components subject to normal wear. Furthermore, the guarantee excludes return shipping of defective part to QSP. We will however ship the replacement part by standard ground service at no charge.

**Parts Department 888-473-5378**

TYPE: Tire and Wheel lift

MODEL: LM-200

<b>Serial Number:</b> <hr/>
--------------------------------

## OPERATION INSTRUCTIONS

### Removing the Tire and Wheel Assembly from a vehicle using The LM-200

1. Attach air to LM-200
2. Position LM-200 under tire and wheel on the vehicle and raise lifting fork by pressing the control lever upward. The control valve is variable speed. The further away from center the lever is moved, the faster the lifting fork will move.
3. Once the rollers have made contact with the bottom of the tire, release the control lever.
4. Remove lugs & pull the top of the tire toward you and disengage wheel from the vehicle.
5. With the tire on the rollers back the lift away from the vehicle and lower the lifting fork.
6. With the tire & wheel assembly resting on the ground, roll the LM-200 away from assembly.

*It is not necessary to lift the tire & wheel assembly off of the LM-200.*

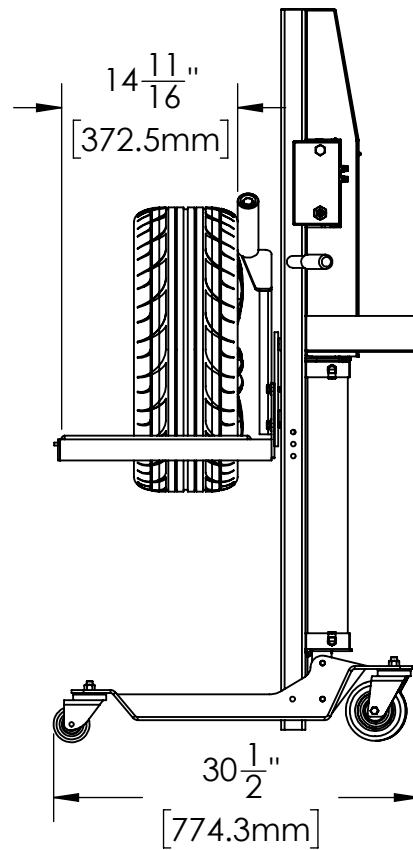
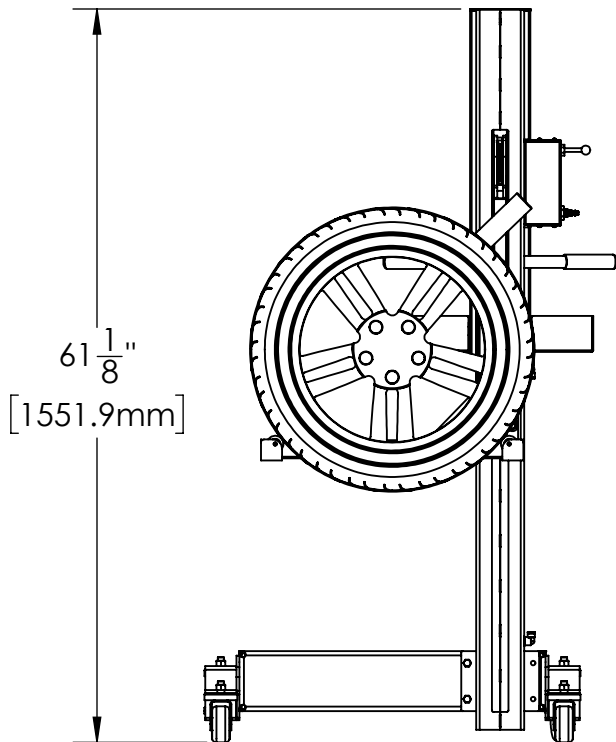
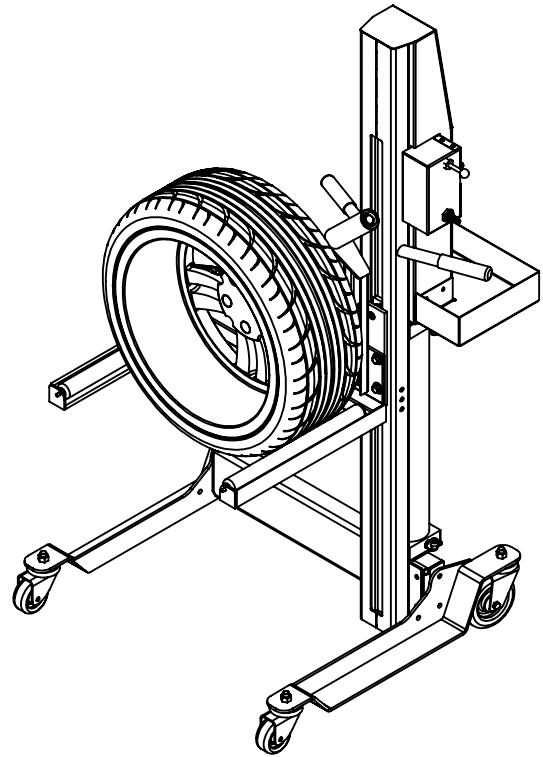
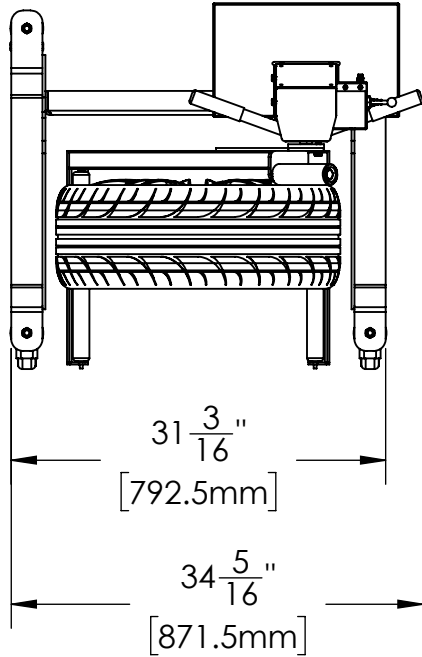
### Installing the Tire and Wheel Assembly on a vehicle using the LM-200

1. With the tire & wheel assembly on the ground, position the LM-200 so that the forks are beneath the assembly.
2. Press up on the control lever to raise the lifting fork up to the proper installation height.
3. Rotate the tire and wheel on the rollers to align lug studs to the wheel.
4. Slowly raise or lower to exact position and push the top of the tire and wheel assembly forward to engage the stud and lug nut holes.
5. Install lug nuts and lower lifting fork.
6. Move LM-200 from beneath vehicle before lowering lift to avoid damaging product.

**Supply air 70-120psi at 20-30cfm**

***Please retain this document for reference when calling Technical Assistance.***

# LIFTING CAPACITY: 200LBS

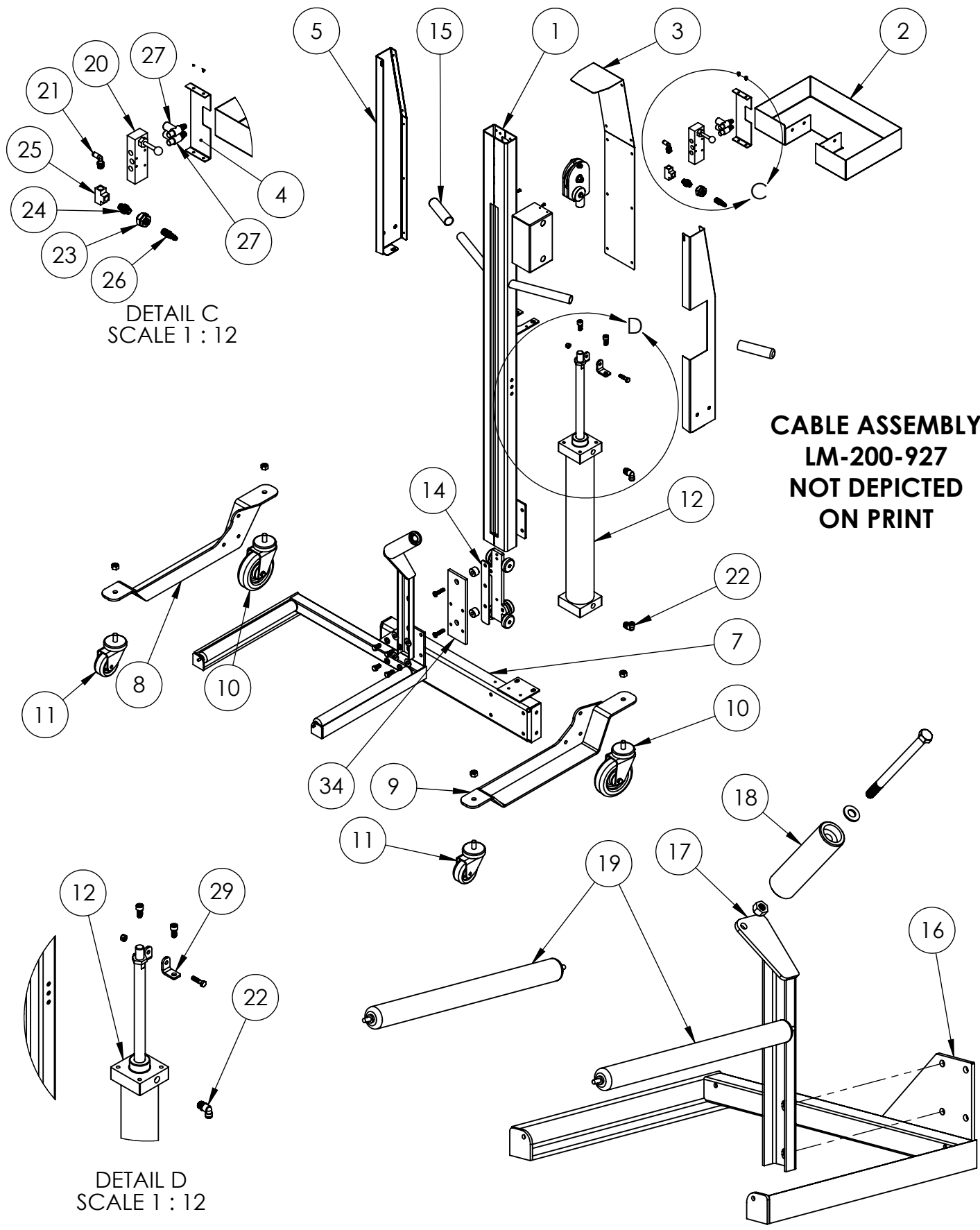


ITEM NO.	PART NUMBER	DESCRIPTION	QTY.
1	LM-200-160	COLUMN WELDED ASSY	1
2	LM-200-174	TOOL TRAY	1
3	LM-200-173	REAR COVER	1
4	LM-200-172	CONTROL BOX COVER	1
5	LM-200-167	COVER RH	1
6	LM-200-166	COVER LH	1
7	LM-200-430	MAST SUPT WELDED	1
8	LM-200-714	CASTER SUPPORT RH	1
9	LM-200-715	CASTER SUPPORT LH	1
10	LM-200-930	CASTER 5" DIA WHEEL	2
11	LM-200-931	CASTER 3" DIA WHEEL	2
12	LM-200-900	AIR CYLINDER	1
13	LM-350-119	SPACER	2
14	LM-200-419	SPACER-TROLLEY	1
15	8000-8	GRIP	2
16	LM-200-410	WHEEL FORK OFF SET	1
17	LM-200-415	ROLLER SUPPORT	1
18	LM-200-R-152	ROLLER	1
19	EG16	ROLLER-TIRE	2
20	LM-200-901	AIR VALVE	1
21	F-1/4 X 1/4NPT L	.25 TUBE X .25NPT ELBOW	2
22	F-3/8 X 1/4NPT L	90 DEGREE CYLINDER ELBOW 3/8T X 1/4 MNPT	2
23	1345	1/4 NPT-3/4-16 THD	1
24	108-60	CHECK VALVE 1/4 NPT	1
25	1347	AIR LINE TEE 1/4 NPT	1
26	1030	QUICK DISCONNECT 1/4 NPT	1
27	F-1/4NPTX3/8T FCL	FLOW CONTROL ELL 3/8 NPT	2
28	LM-200-708	PULLEY ASSY WELDMENT	1
29	LM-200-210	CABLE ANCHOR	2
30	LM-200-606	CABLE PULLEY WHEEL 3.5"	1
31	LM-200-703	GUIDE WHEEL BUSHING	2
32	LM-200-706	GUIDE WHEEL	2
33	LM-200-407	ROLLER-TROLLEY	6
34	LM-200-401	PLATE-FRONT	1
35	LM-200-437	TROLLEY WELDMENT	1
36	T-3/8 PU BLACK TUBE	3/8 BLACK POLYURETHANE TUBE	6
37	LM-200-10	LIFT MATE DECAL KIT	1
38	P-LM-BOX	60-3/16 X 19 X 6-3/4 FTC TOP & BOTTOM	1
39	P-TM-BOX	26-1/4 X 25-15/16 X 8-3/8 RSC 44 ECT	1
40	P-16X12X4	16 X 12 X 4-5/8 RSC ECT32 KRAFT	1
41	H-LM-HDWR	LM-200 HARDWARE KIT	1
42	LM-200-927	CABLE ASSY	1
43	137-71	YELLOW COIL HOSE 4 1/2 COIL	1
44	T-1/4 PU TUBE-FLEX	1/4 BLACK POLYURETHANE AIR LINE	0.75



## LM-200 INSTALLATION & ASSEMBLY INSTRUCTION

PROPRIETARY AND CONFIDENTIAL  
 THE INFORMATION CONTAINED IN THIS DRAWING IS THE SOLE PROPERTY OF QSP. ANY REPRODUCTION IN PART OR AS A WHOLE WITHOUT THE WRITTEN PERMISSION OF QSP IS PROHIBITED.



DETAIL C  
SCALE 1 : 12

**CABLE ASSEMBLY  
LM-200-927  
NOT DEPICTED  
ON PRINT**

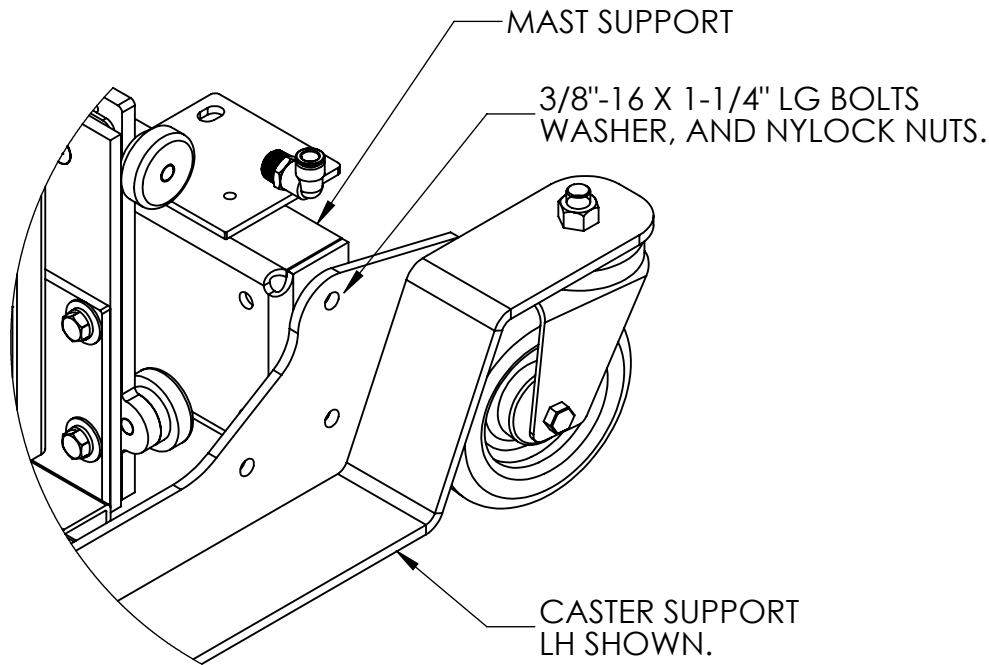
DETAIL D  
SCALE 1 : 12



**LM-200 INSTALLATION & ASSEMBLY INSTRUCTION**

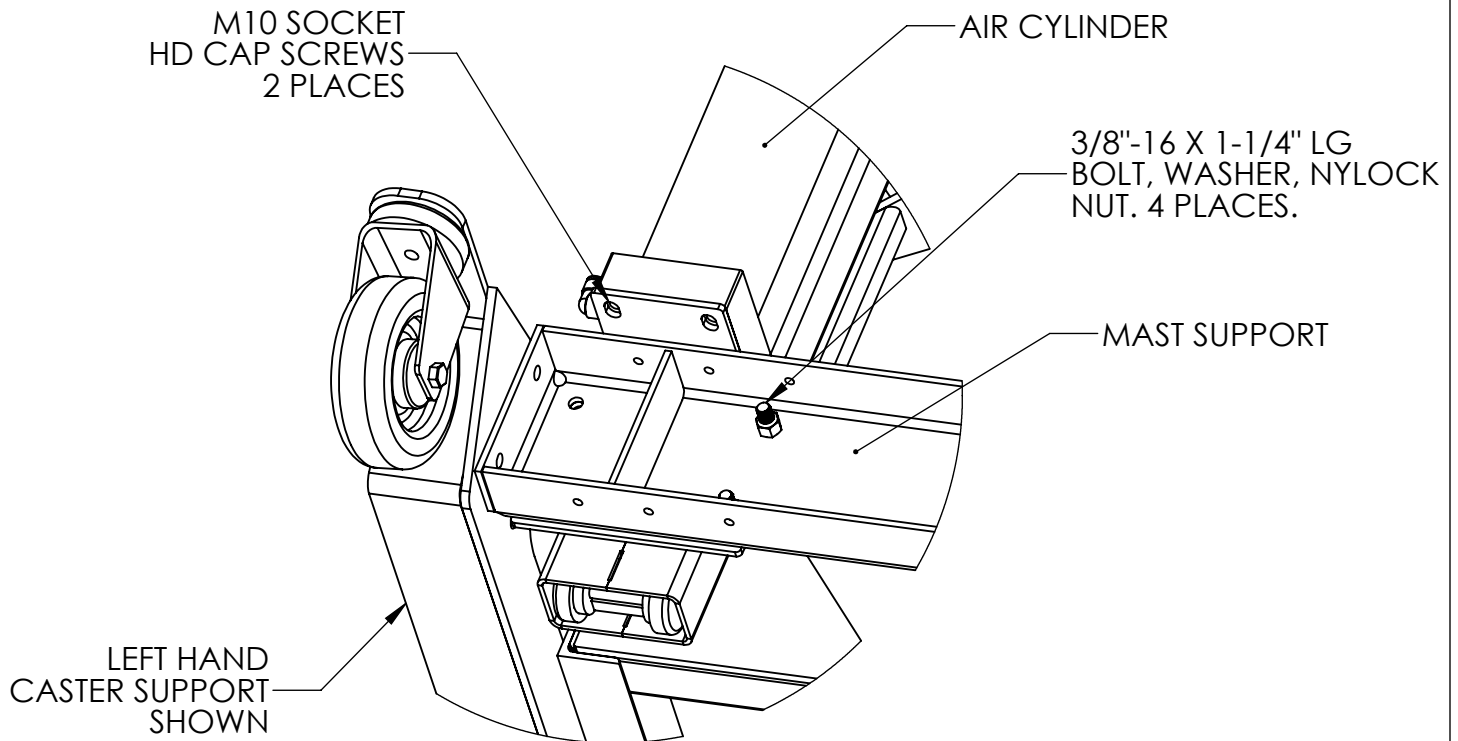
**PROPRIETARY AND CONFIDENTIAL**  
THE INFORMATION CONTAINED IN THIS DRAWING IS THE SOLE PROPERTY OF QSP. ANY REPRODUCTION IN PART OR AS A WHOLE WITHOUT THE WRITTEN PERMISSION OF QSP IS PROHIBITED.

## STEP #1 CASTER INSTALLATION.



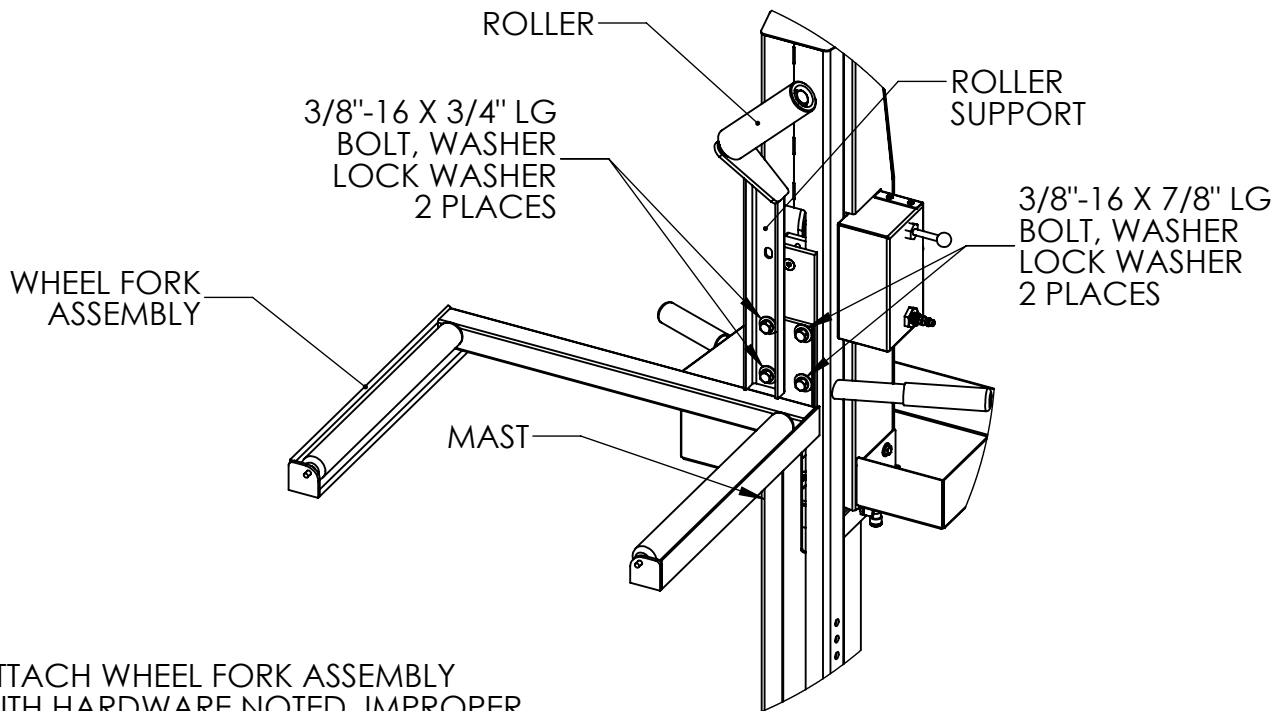
1. ATTACH CASTER SUPPORTS RH & LH TO MAST SUPPORT USING HARDWARE NOTED.

## STEP #2 MAST INSTALLATION



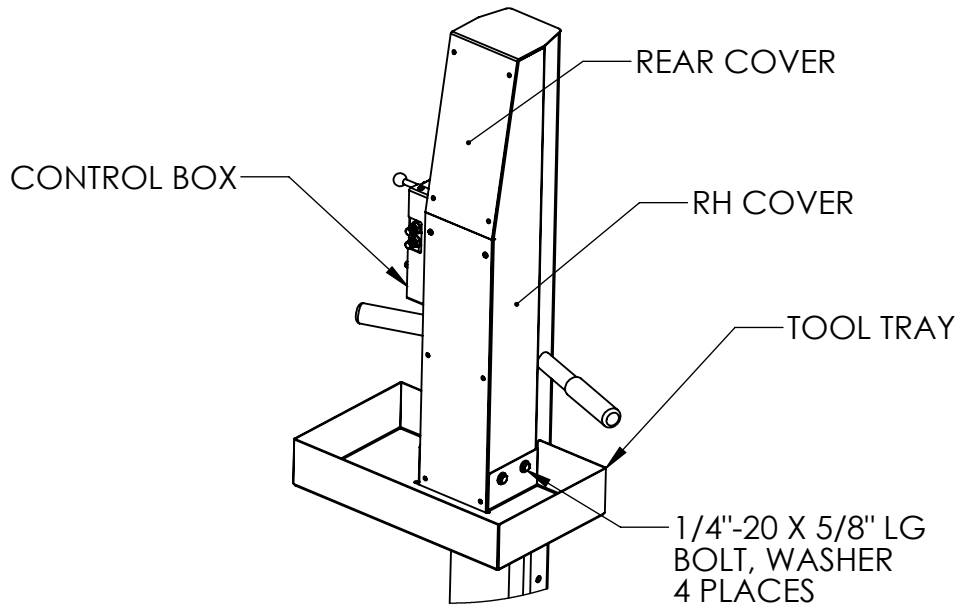
1. ATTACH THE MAST TO THE MAST SUPPORT USING HARDWARE NOTED.

## STEP #3 FORK INSTALLATION

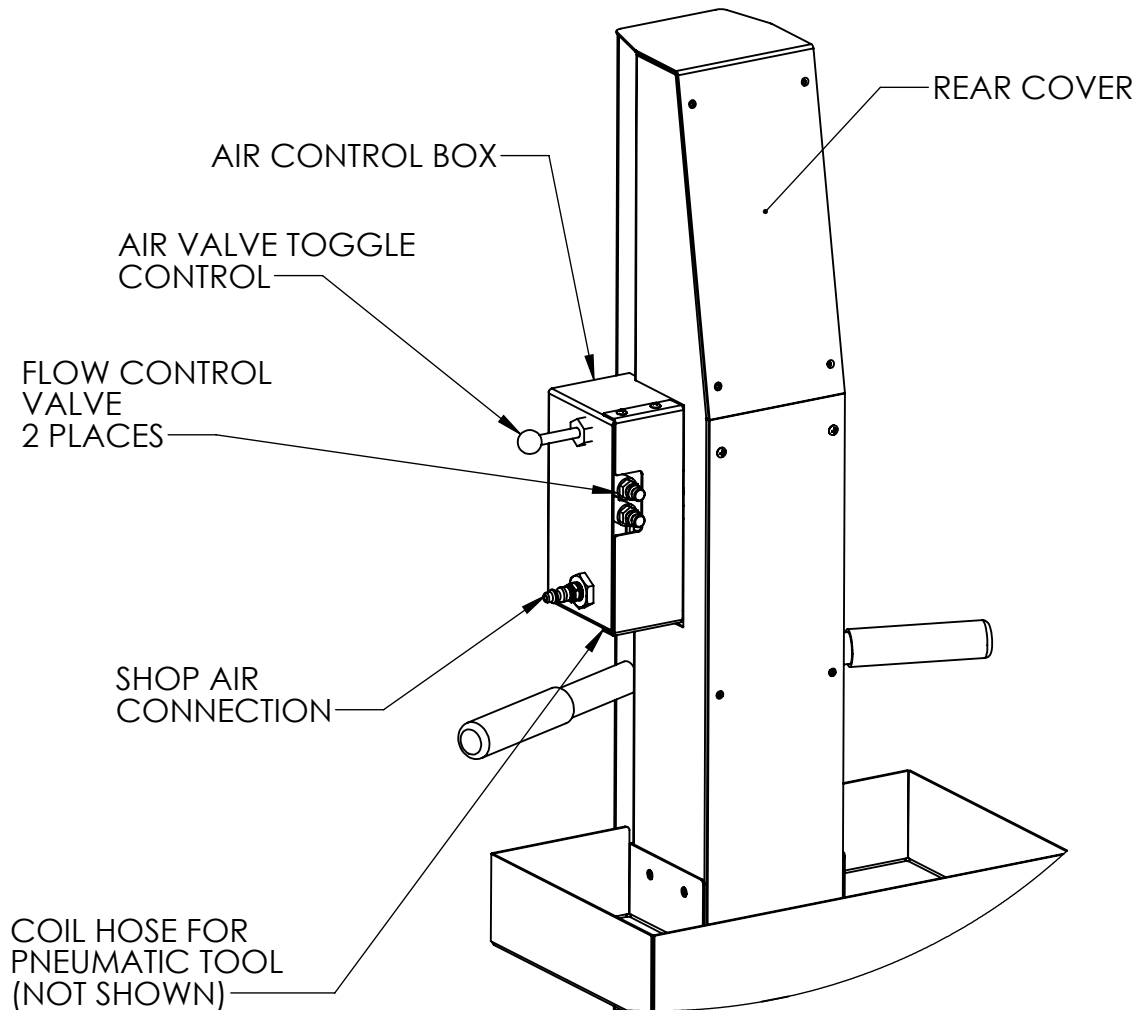


ATTACH WHEEL FORK ASSEMBLY WITH HARDWARE NOTED. IMPROPER LOCATION OF HARDWARE CAN CAUSE INTERFERENCE OF BOLT WITH MAST.

## STEP #4 TOOL TRAY INSTALLATION.



## STEP #5 AIR LINE CONNECTION



**NOTE:**  
THE FLOW CONTROL VALVES GOVERN THE RATE AT WHICH THE WHEEL FORK RAISES AND LOWERS. THESE CONTROLS ARE PRESET AT THE FACTORY, BUT CAN BE ADJUSTED BY THE END USER IF THE DESIRED SPEED NEEDS TO BE INCREASED OR DECREASED.

### SUGGESTED MAINTENANCE:

1. THE LM-200 LIFT OPERATES BEST WITH SHOP AIR THAT IS CLEAN AND DRY.
2. PERIODICALLY CHECK THE TIGHTNESS OF ALL FASTENERS.
3. PERIODICALLY CHECK THE CONDITION OF LIFTING CABLE. IF ANY FRAYED STRANDS ARE NOTICED REPLACE CABLE.